

ARIEL-II:

Overview and Project Management Approach

Peter Bayliss
Project Manager

2021-11-08



Agenda

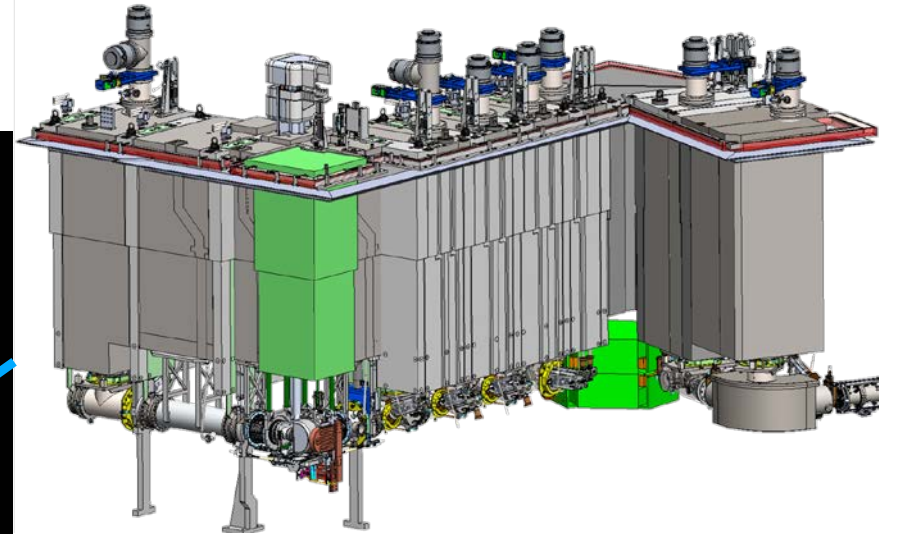
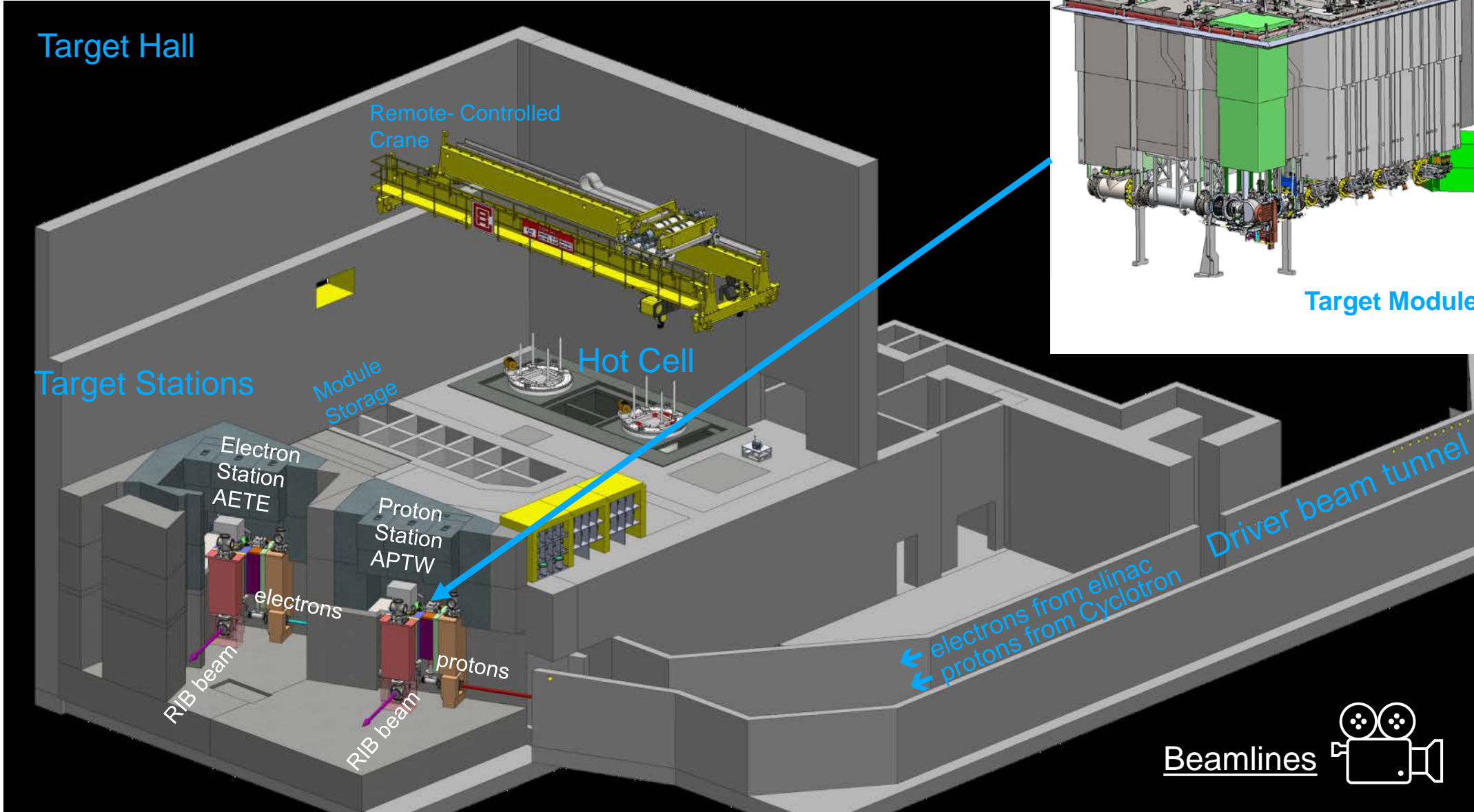
- What is ARIEL-II?
- Who is the ARIEL-II team?
- How is the project managed?
- Successes and areas for improvement

What is ARIEL?

- **ARIEL:** The Advanced Rare Isotope Laboratory is TRIUMF's flagship multidisciplinary research facility
- [The Advanced Rare Isotope Laboratory](#)
- **ARIEL-I** - Building completed in 2013
- **ARIEL-II**
 - Commenced in 2017
 - Design, assembly & commissioning, incl
 - Target Stations, and
 - Proton & Electron Beamlines
 - Hot Cell



Target Hall and Target Stations



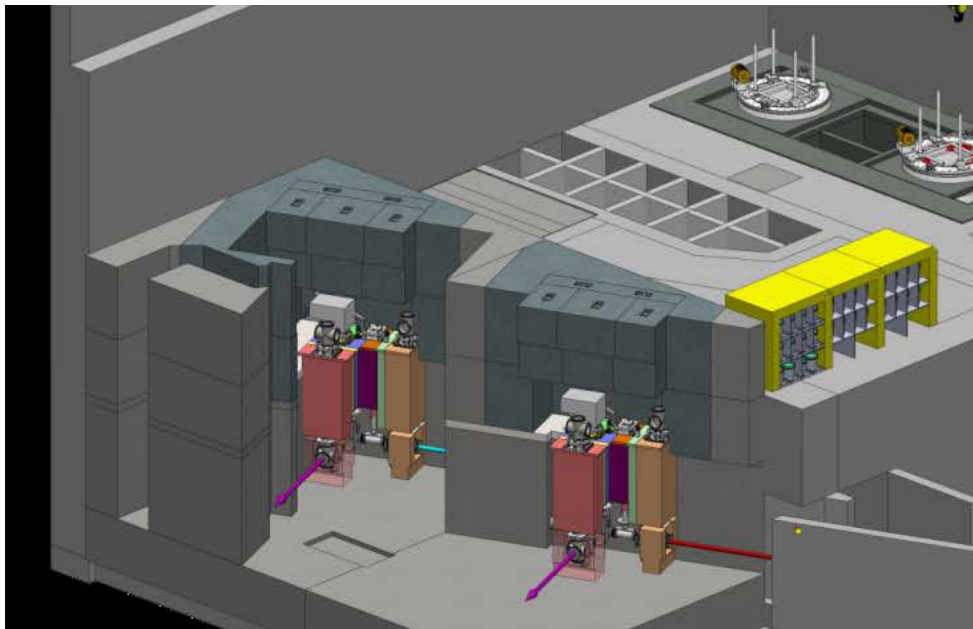
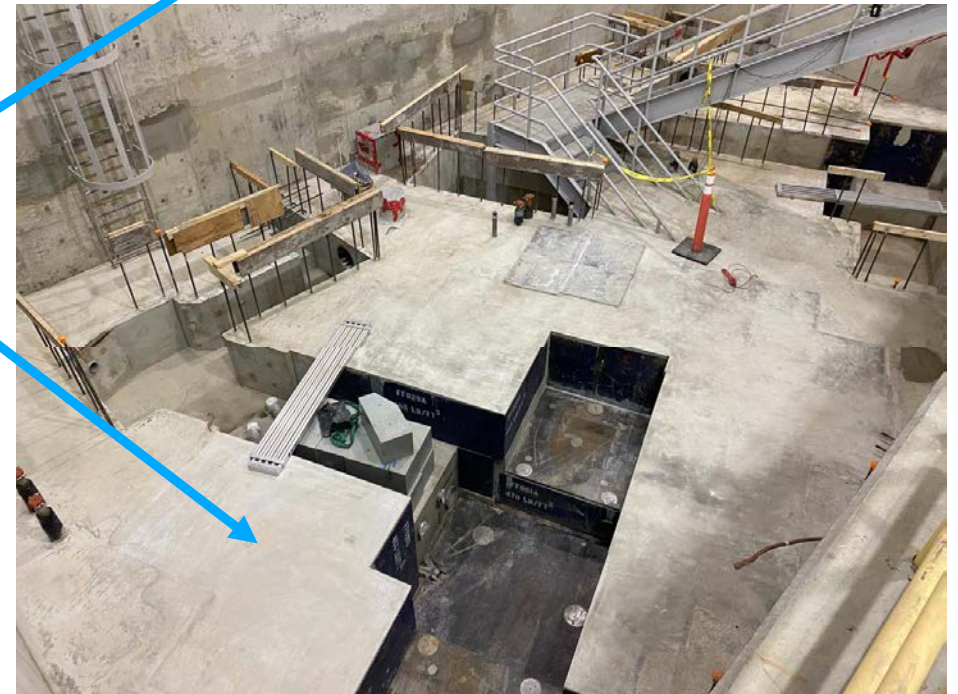
Target Module Assembly

Target Hall Construction



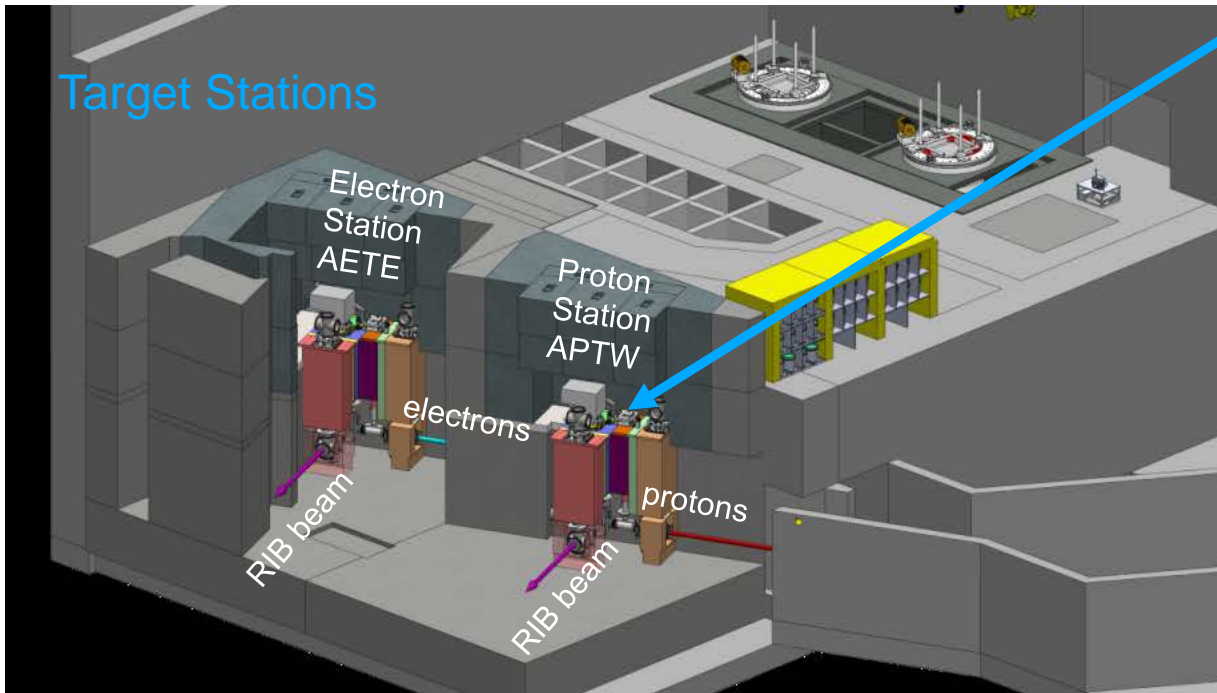
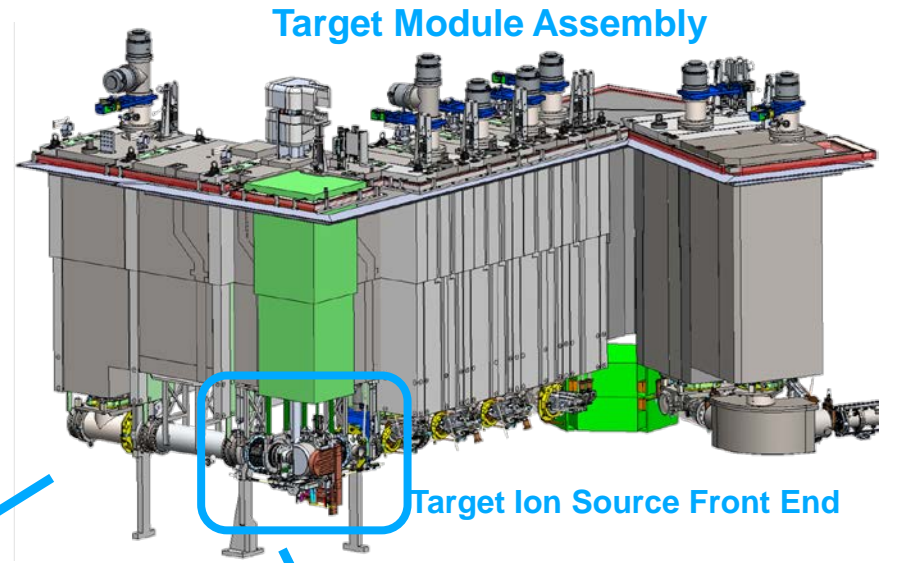
8m of steel and concrete shielding validated by simulations.

2m of construction complete to date



Target Station Assembly

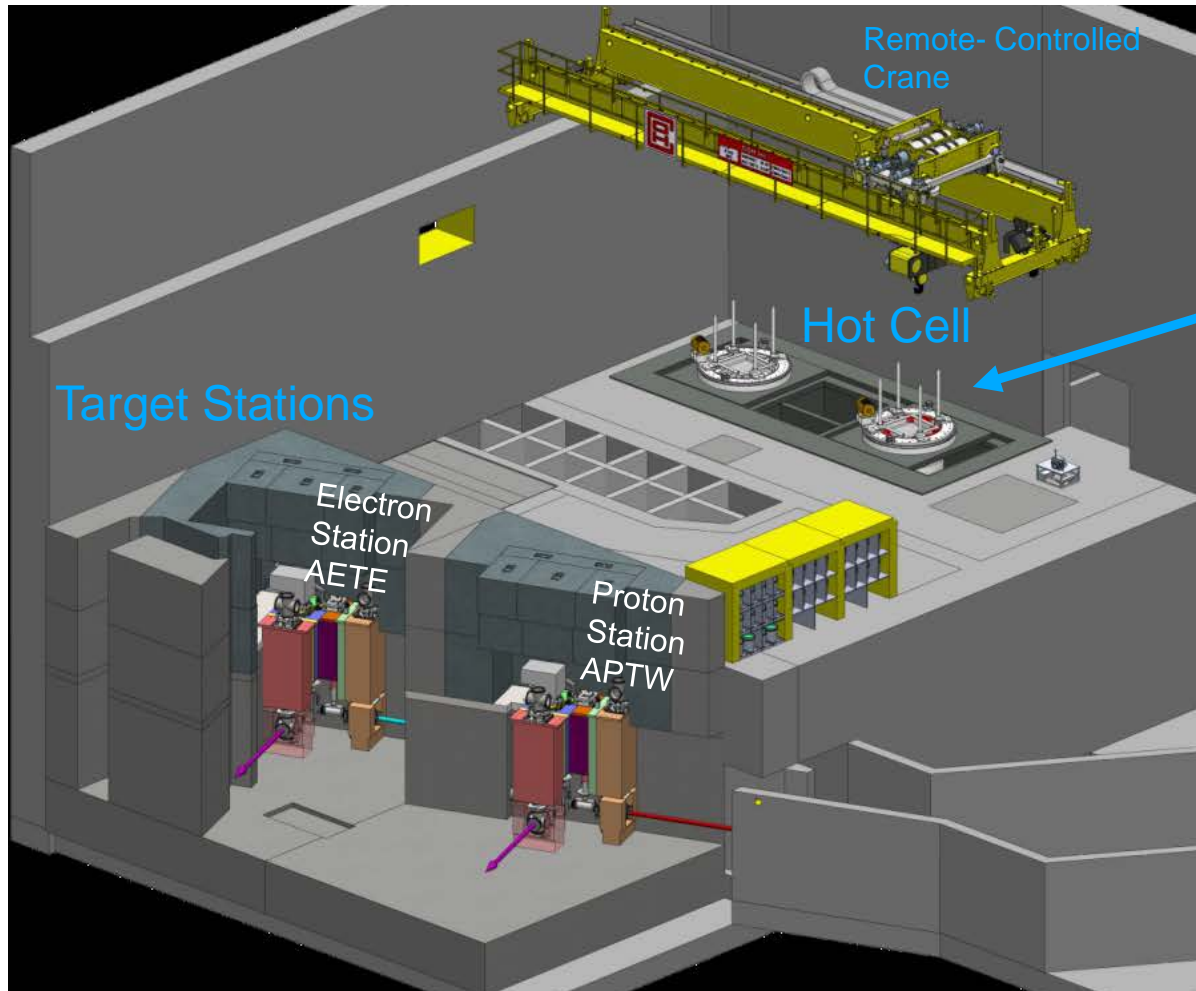
- TISA - Target and Ion Source Acceptance Test Stand
- Prototype of Front End
- Testing in progress



Prototype under test



Hot Cell Installation



- Hot Cell –
- Contractor has completed Factory Acceptance Test
- Installation starting February 2022

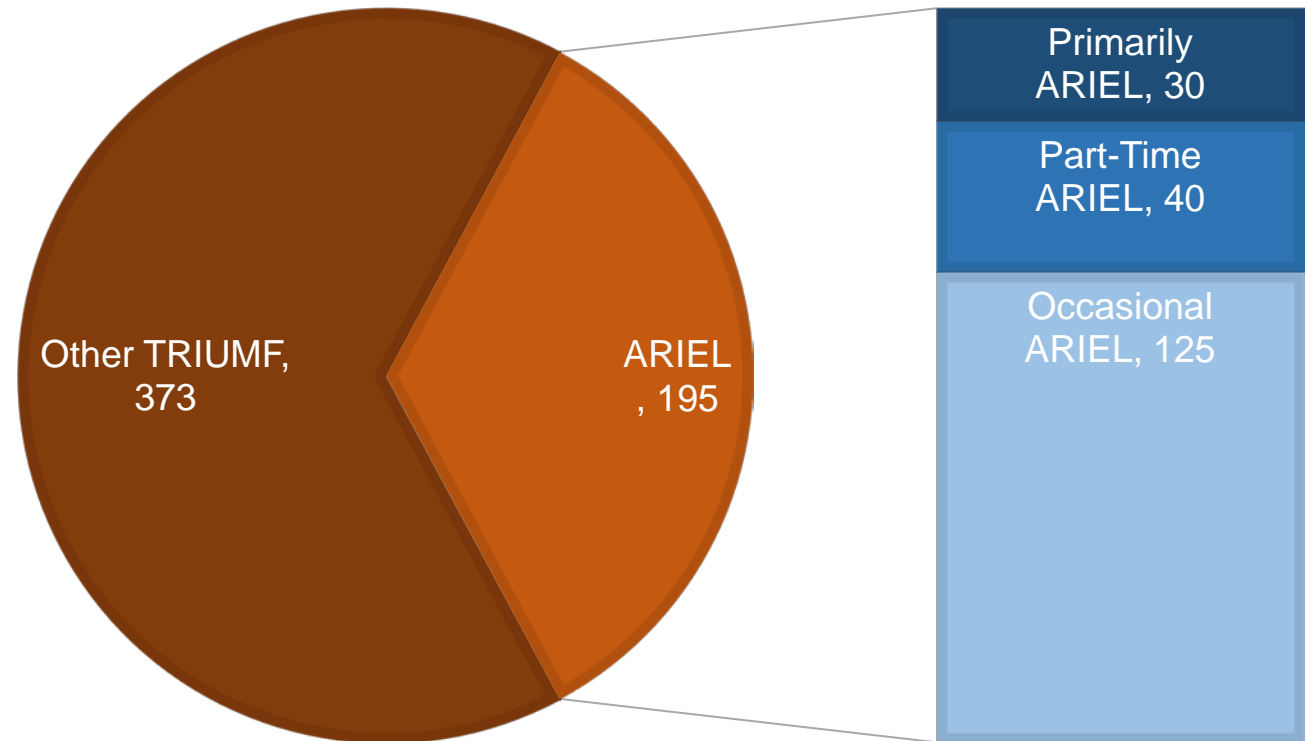
Who is the ARIEL-II team?



Who is the ARIEL-II team?

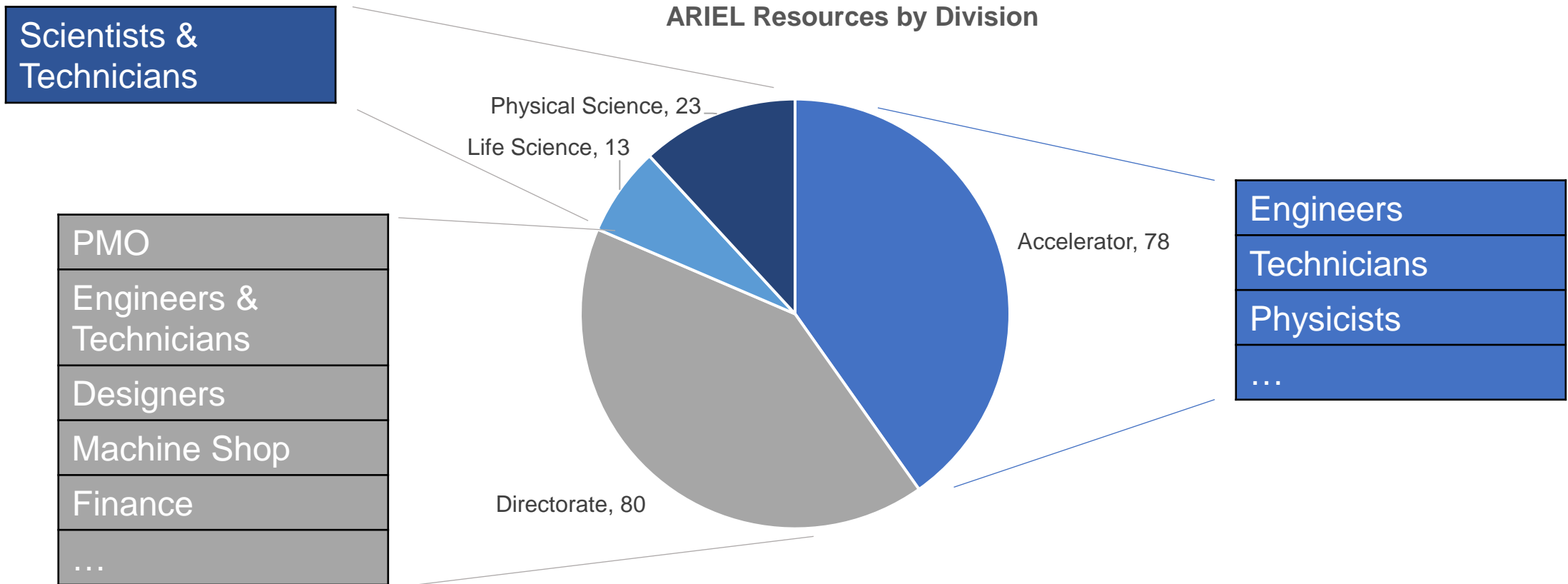
- Loosely matrixed organisation
- Core project team supported by many other TRIUMF groups and personnel
- about one third of the TRIUMF staff have contributed in 2021

TRIUMF & ARIEL STAFF IN 2021



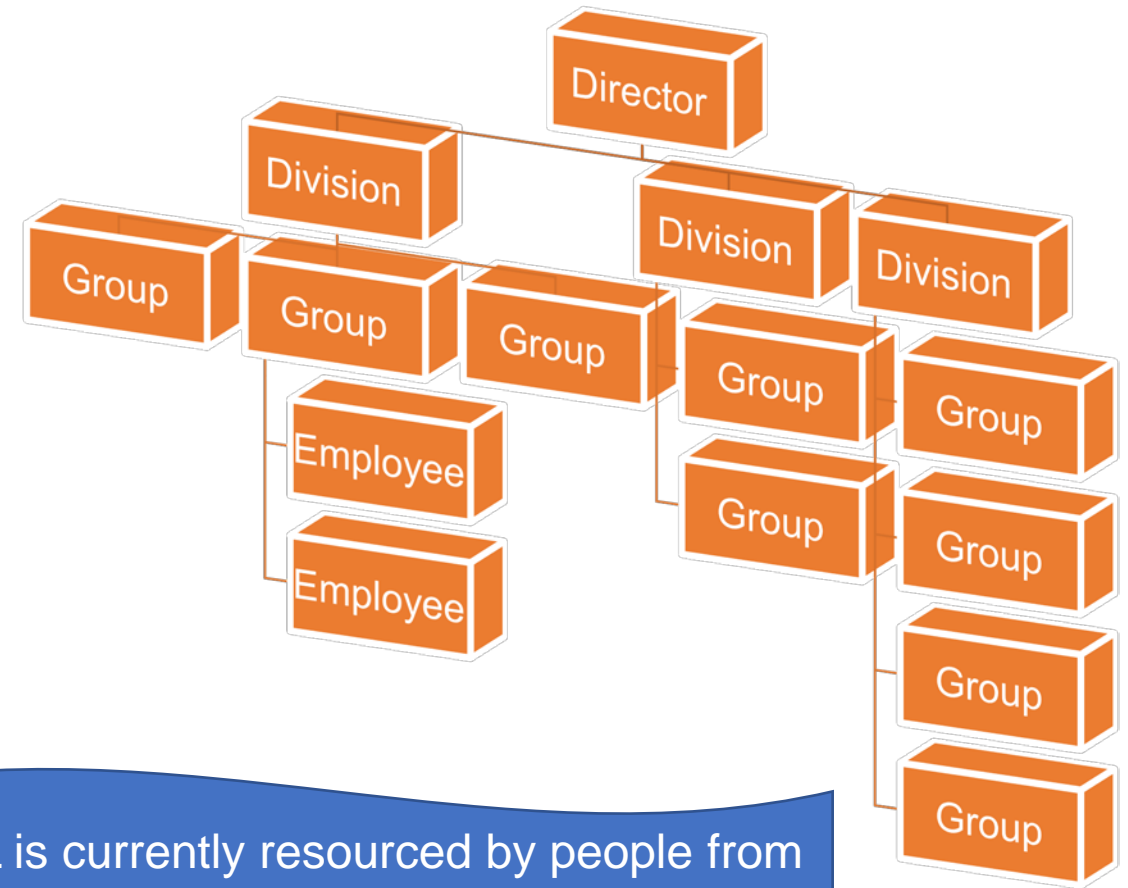
ARIEL-II by Division

- ARIEL is made up of people from all TRIUMF divisions, which also support other projects and Operations



TRIUMF Groups

- TRIUMF divisions are organised by *Groups*
- Group Leaders ...
 - Manage employees' work assignments
 - Have to balance projects with Operations
 - Some group leaders are also ARIEL leaders
 - Others are not closely involved with the ARIEL project

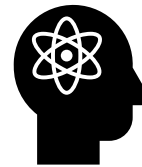


ARIEL is currently resourced by people from 30 different Groups

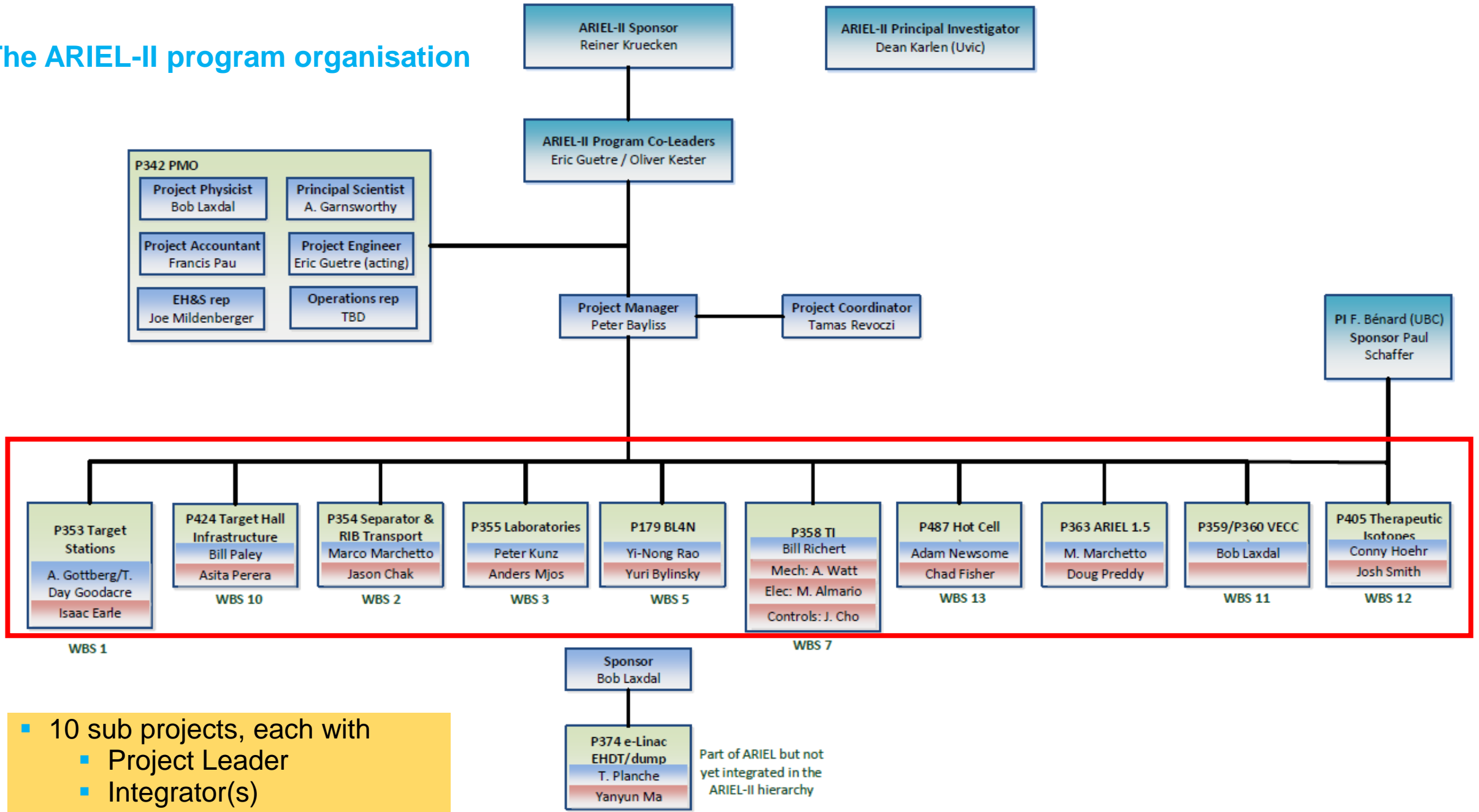
Groups may provide people to tasks
or
be assigned a work package as a Group

How is the Project Managed?

How to effectively manage a large, complex project with a very loosely matrixed project team?



The ARIEL-II program organisation

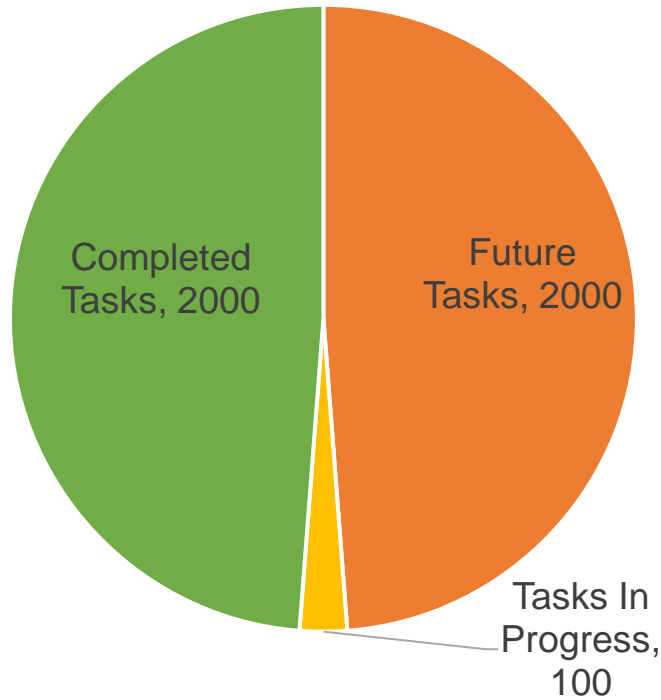


- 10 sub projects, each with
 - Project Leader
 - Integrator(s)

Integrated Project Schedule

The 10 sub-projects are tightly coupled and planned in one MS Project master schedule

ARIEL-II Tasks in MS Project



- Typically about 100 tasks in progress
- Led by 40 Task Owners
- Staffed by about 100 resources

- Commissioning
 - AETE - mid 2025
 - APTW – late 2026

Owner	Duration	Start	Finish	Lookahead Finish	Resource Names
	3103 d?	'14 Sep 01	'27 Mar 18	NA	
	302 d	'14 Sep 15	'15 Nov 27	NA	
	1133 d?	'14 Sep 15	'19 Apr 17	NA	
	2782 d?	'14 Sep 01	'25 Dec 15	NA	
	2672 d?	'14 Sep 01	'25 Jul 08	NA	
	559 d	'18 Feb 21	'20 May 29	NA	
	2320 d?	'15 May 01	'24 Oct 03	NA	
	2396 d?	'14 Sep 01	'24 May 24	NA	
	2672 d?	'14 Sep 02	'25 Jul 08	NA	
	1476 d	'19 May 10	'25 May 09	NA	
	1611 d?	'16 Jul 04	'23 Jan 24	NA	
	644 d?	'22 Jun 22	'25 Feb 04	NA	
	1992 d?	'16 Sep 12	'24 Oct 17	NA	
	2245 d?	'16 Oct 28	'25 Dec 15	NA	
	1132 d	'19 Apr 09	'23 Nov 10	NA	
	1462 d	'17 Sep 20	'23 Aug 31	NA	
Commissioning	5 d	'25 Feb 05	'25 Feb 11	NA	Marchetto M[15%],Muller N[15%],Mjos A[15%],K
	1411 d?	'20 Jan 17	'25 Oct 07	NA	

How is the schedule maintained?

UID	% Complete	CN	Context	Task Name	Duration	Start	Finish	Owner	Estimate	Estimated Finish	Comments
10988	85%	P355	TISA Beam Line Optics & Diagnostics+ Procure & Int	TISA Beam Line Optics & Diagnostics - procurement & m	158 d	2021-03-01	2021-10-16	Lassen J	85%	2021-10-16	Please enter updates
10989	0%	P355	TISA Beam Line Optics & Diagnostics+ Procure & Int	TISA Beam Line Optics & Diagnostics installation	10 d	2021-10-16	2021-10-29	Lassen J	0%	2021-10-29	Please enter updates
13130	90%	P355	TISA BL Controls	TISA Controls Optics & Diagnostics SW Development	105 d	2021-06-14	2021-11-12	Rowe M	90%	2021-11-12	Please enter updates
13131	0%	P355	TISA BL Controls	TISA Controls Optics & Diagnostics EPICS Pages	105 d	2021-06-14	2021-11-12	Ezawa K	0%	2021-11-12	Please enter updates
13133	0%	P355	TISA BL Controls	TISA Controls Optics & Diagnostics Controls HW & Cab	92 d	2021-07-01	2021-11-12	Ezawa K	0%	2021-11-12	Please enter updates
9346	95%	P355	TISA Controls - Design/Implement/Install	TISA Controls interlocks specification	102 d	2021-06-04	2021-10-29	Goodacre T D	95%	2021-10-29	Please enter updates
9345	75%	P355	TISA Controls - Design/Implement/Install	TISA Controls PLC software development	140 d	2021-04-12	2021-10-29	Cho J	75%	2021-10-29	Please enter updates
9350	80%	P355	TISA Controls - Design/Implement/Install	EPICS pages for vacuum, electrical, mechanical	110 d	2021-05-28	2021-10-29	Cho J	80%	2021-10-29	Please enter updates
9343	75%	P355	TISA Controls - Design/Implement/Install	TISA Controls Installation Part 1 (PLC)	103 d	2021-06-10	2021-11-05	Cho J	75%	2021-11-05	Please enter updates
9347	15%	P355	TISA Controls - Design/Implement/Install	TISA Controls Installation Part 2 (PS connection)	93 d	2021-06-24	2021-11-05	Cho J	15%	2021-11-05	Please enter updates
13232	0%	P355	TISA Controls Testing	Vacuum + Controls ready	1 d	2021-10-29	2021-10-29	Rowe M			
13234	0%	P355	TISA Controls Testing	Auxiliary System + Controls Ready	1 d	2021-10-29	2021-10-29	Rowe M			
13235	0%	P355	TISA Controls Testing	HV System + Controls ready	1 d	2021-10-29	2021-10-29	Rowe M			

Legend	
Top Priority	NEEDS UPDATING ASAP!!!
Second Priority	ENDING SOON?!
Third Priority	PROGRESS % UPDATE NEEDED!
Upcoming	STARTING SOON?!
Feedback	Please overwrite with your updates

Peter Bayliss B2 ...

@Peter Bayliss please update status

@mention or reply

In Excel online, exported from project

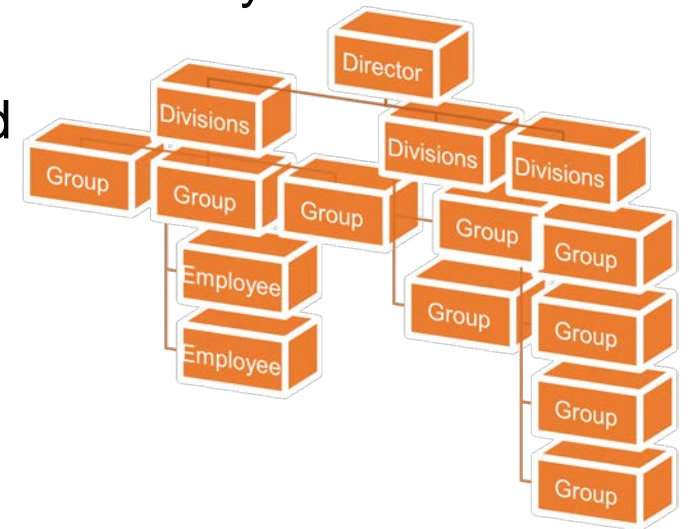
- Task owners update the live sheet
 - % complete
 - Changes to planned finish
- Excel Comments:
 - can direct a question to a specific cell via @email

Weekly Metrics:
all tasks
updated every 2
weeks

- Easier to use, more flexible than MS Project online timesheets
- *Becoming* established in the project culture

How to manage resources from 30 different groups and engage group leaders?

- The *4 Month Lookahead* was developed to get buy-in and commitment to ARIEL-II project from the Group Leaders
 - Shows ARIEL tasks and days of work for all employees, by Group
 - Group Leaders review and comment on schedule and resource availability
 - Also Includes Milestones to be completed in the 4 month period



Monitoring & review of resource loading



- Monthly review of workload for all resources
- Compares scheduled work on ARIEL-II against their availability for the project
- ARIEL project maintains a log availability for all resources, taking into account:
 - Other projects and operations
 - Training, Vacation, etc
 - Maximum 80% loading

Metrics

- Has our approach been successful?

Keeping on Schedule for CFI goals?



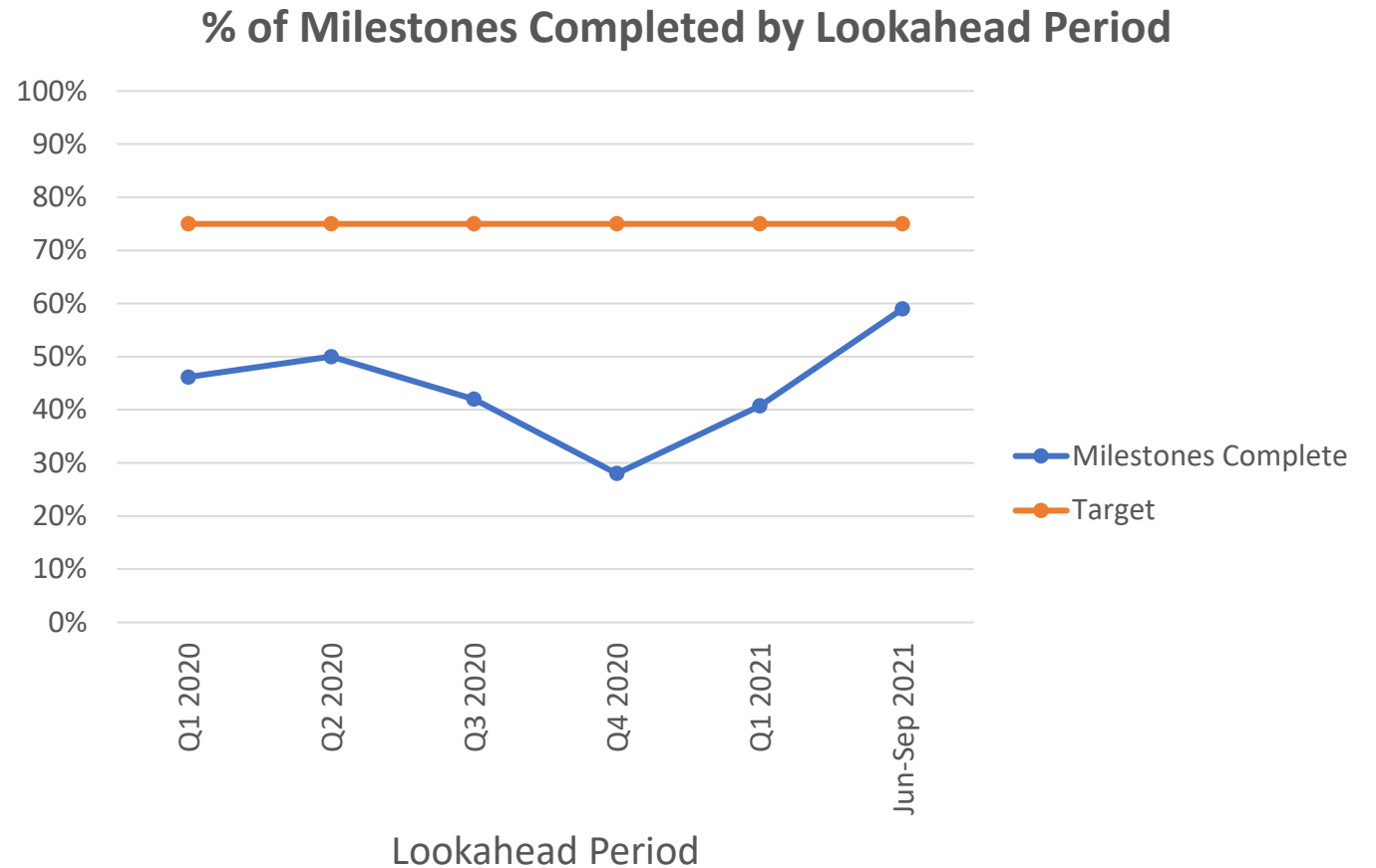
Prior to April 2021 re-baseline, the Commissioning of AETE (Electron Target Station) had slipped by about 14 months



Since April we are on track no slippages

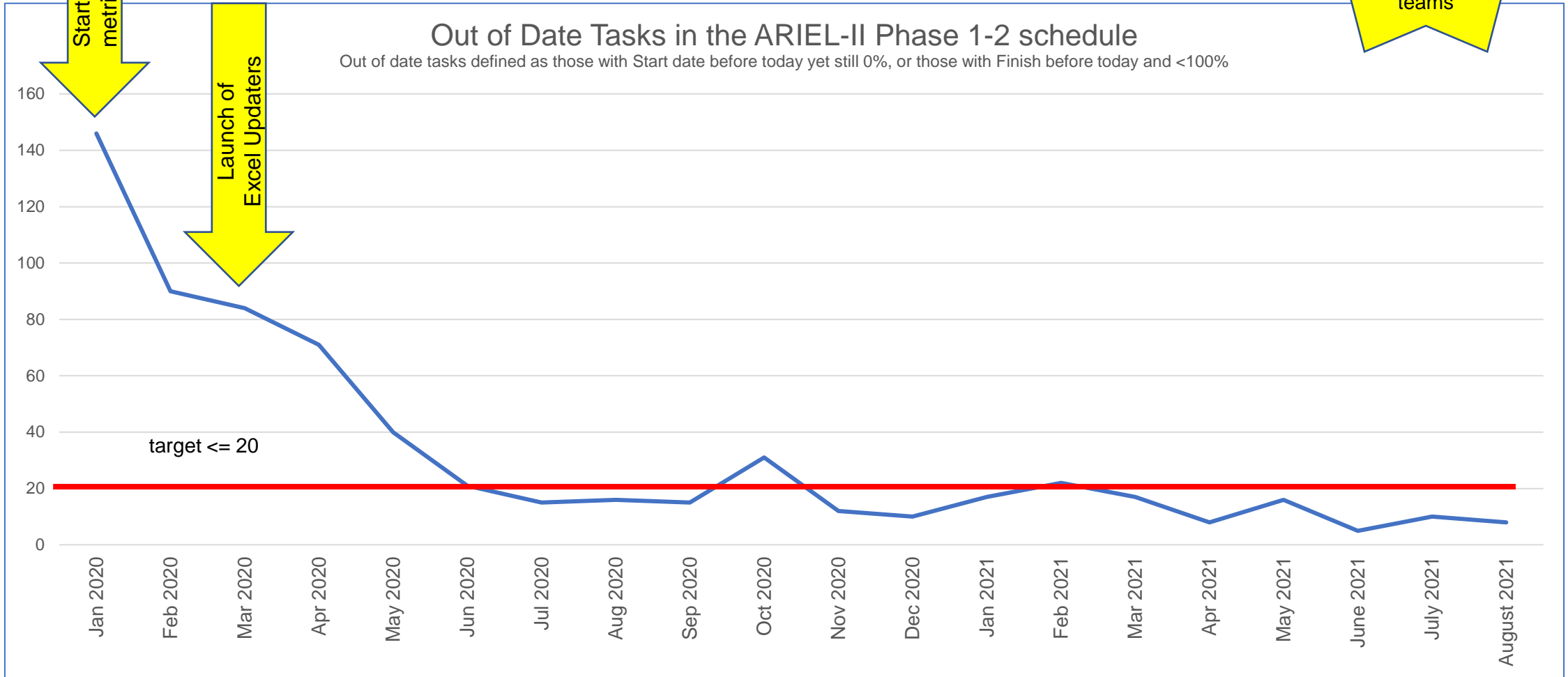
Measuring progress against the plan

- Trending up, but still needs improvement
- Report pending on causes and suggestions for improvements



Schedule Metrics – Out of Date Tasks

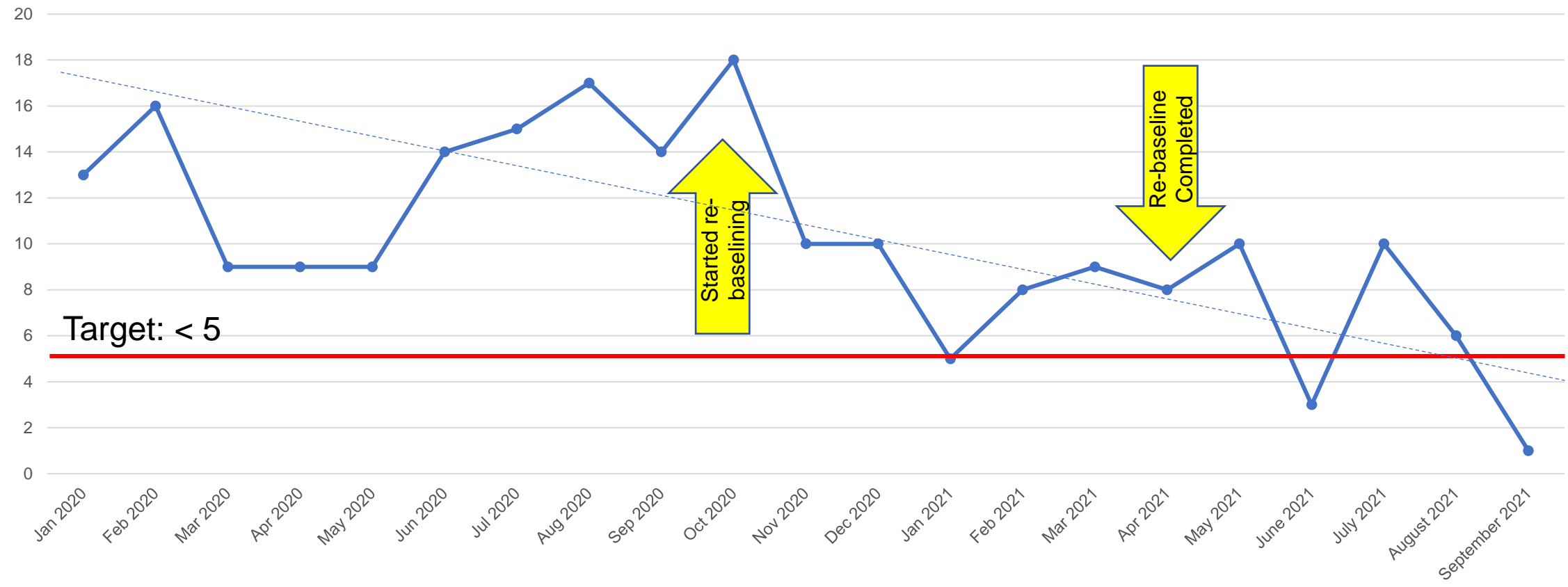
Key indicator of schedule accuracy and engagement with the teams



Schedule Metrics – Over loaded Resources



Number of Overloaded Resources
Maximum number of overloaded personnel situations in the 3 months from this month



Target: < 5

Challenges and Solutions

- Summary

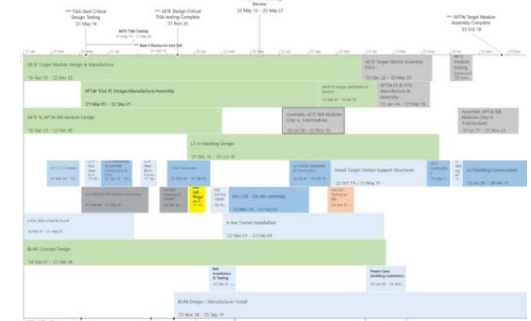
Challenge	Solutions Applied
Slipping Milestones	<ul style="list-style-type: none"> • Focus on significant milestones • Added milestones in 4 month Lookahead (Measured by sub-project) • Weekly milestone meeting with sub project leaders • ARIEL-II Dashboard
Resources not committing to ARIEL tasks	<ul style="list-style-type: none"> • 4 month lookahead to engage Group Leaders ... ensures that ARIEL is a part of their conversation with group members
Insufficient or Overloaded resources	<ul style="list-style-type: none"> • Better Resource balancing in master schedule • Registry of individual's % availability for ARIEL
Lack of awareness of / or visibility to assigned work and schedule	<ul style="list-style-type: none"> • Updater sheets • Task Finder tool
Schedule inaccuracy	<ul style="list-style-type: none"> • Updater sheets to collect status by task • Monthly metrics to measure schedule quality
Low Morale	<ul style="list-style-type: none"> • Employee Survey → Improvement Committee

Tools & Communication



Dashboard

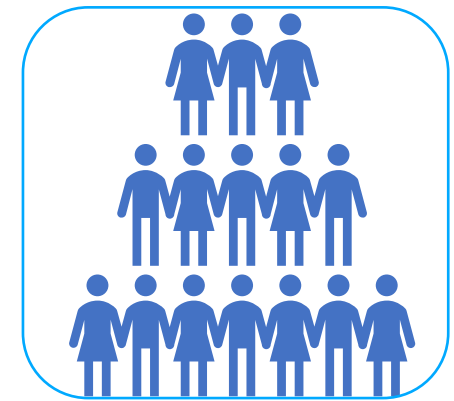
Task Finder



Timeline view

News!

Risks & Issues



All Hands Meetings

Questions?

Thank you
Merci

www.triumf.ca

Follow us @TRIUMFLab

