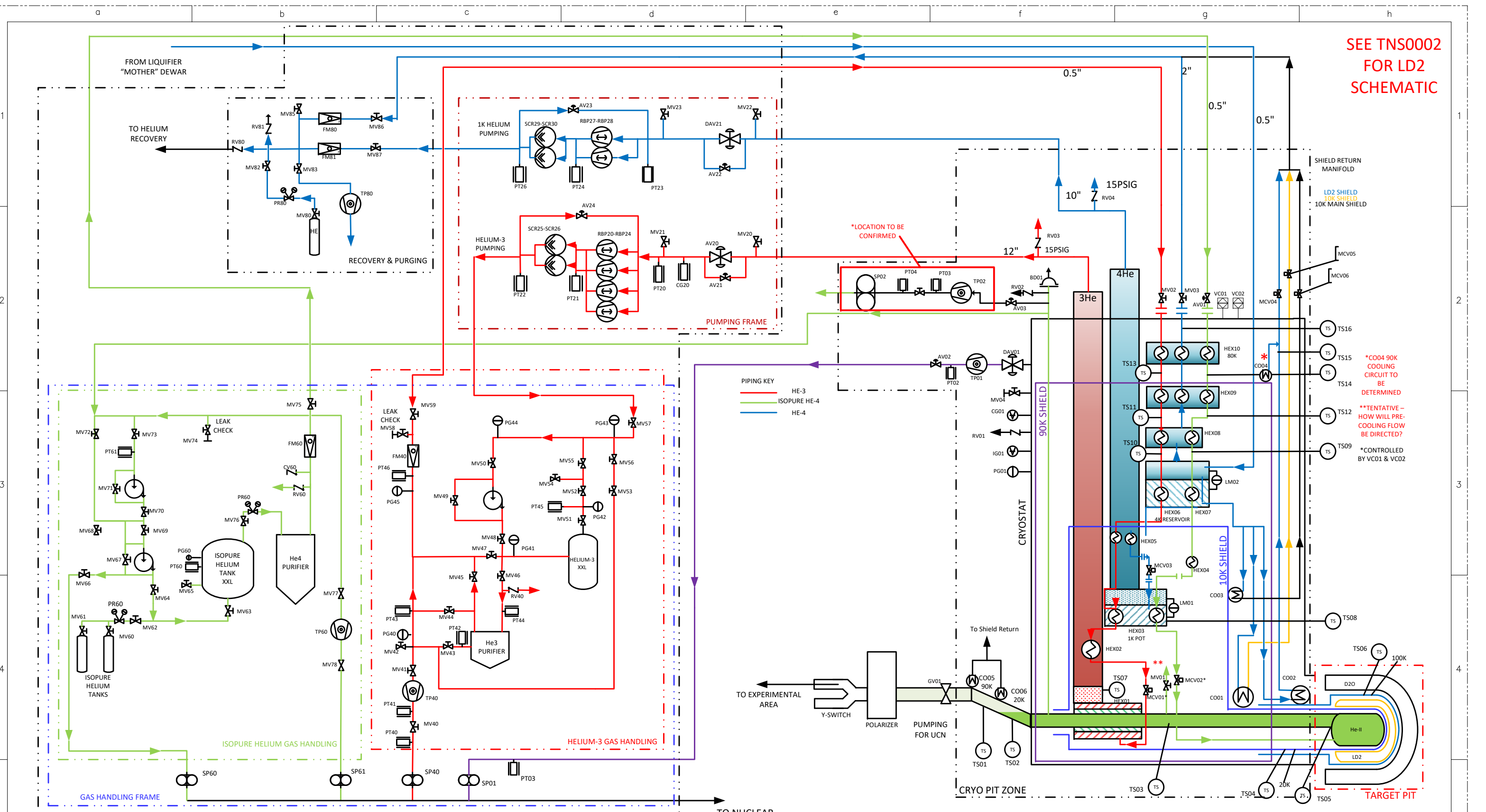


SEE TNS0002
FOR LD2
SCHEMATIC



PIPING KEY
 HE-3
 ISOPURE HE-4
 HE-4

*CO04 90K COOLING CIRCUIT TO BE DETERMINED
 **TENTATIVE - HOW WILL PRE-COOLING FLOW BE DIRECTED?
 *CONTROLLED BY VC01 & VC02

LEGEND

DO NOT COPY, THIS DOCUMENT CONTAINS PROPRIETARY INFORMATION
 THIS DRAWING, SUBJECT MATTER AND INFORMATION CONTAINED THEREIN IS THE SOLE EXCLUSIVE AND CONFIDENTIAL PROPERTY OF TRIUMF LABORATORY, AND AS SUCH, SHALL NOT BE DISCLOSED, COPIED, REPRODUCED OR USED, IN WHOLE OR IN PART, WITHOUT EXPRESSED, WRITTEN PERMISSION OF THE TRIUMF LABORATORY OR ITS REPRESENTATIVES.

TOLERANCES UNLESS OTHERWISE SPECIFIED	REV	DATE	REVISION DESCRIPTION	BY	APPD
DECIMALS X ± 0.5					
.X ± 0.2					
.XX ± 0.1					
ANGULAR ± 1°					
SURFACE FINISH 1.6 µm					
ALL DIMS IN MILLIMETRES					
DESIGNED RM/SH/CM	Canada's particle accelerator centre Centre canadien d'accélération des particules 4004 Westbrook Mall, Vancouver, BC, V6T 2A3, Canada				
DRAWN SH	DRAFT UCN HORIZONTAL SOURCE P&ID UCN 2018				
CHECKED CM	SCALE 1:1 DATE				
WPN #	DWG NO. TNS0354 SIZE SHEET 1 OF 1 REV 2				
TRACKING #	THIR-DANGLE PROJECTION				