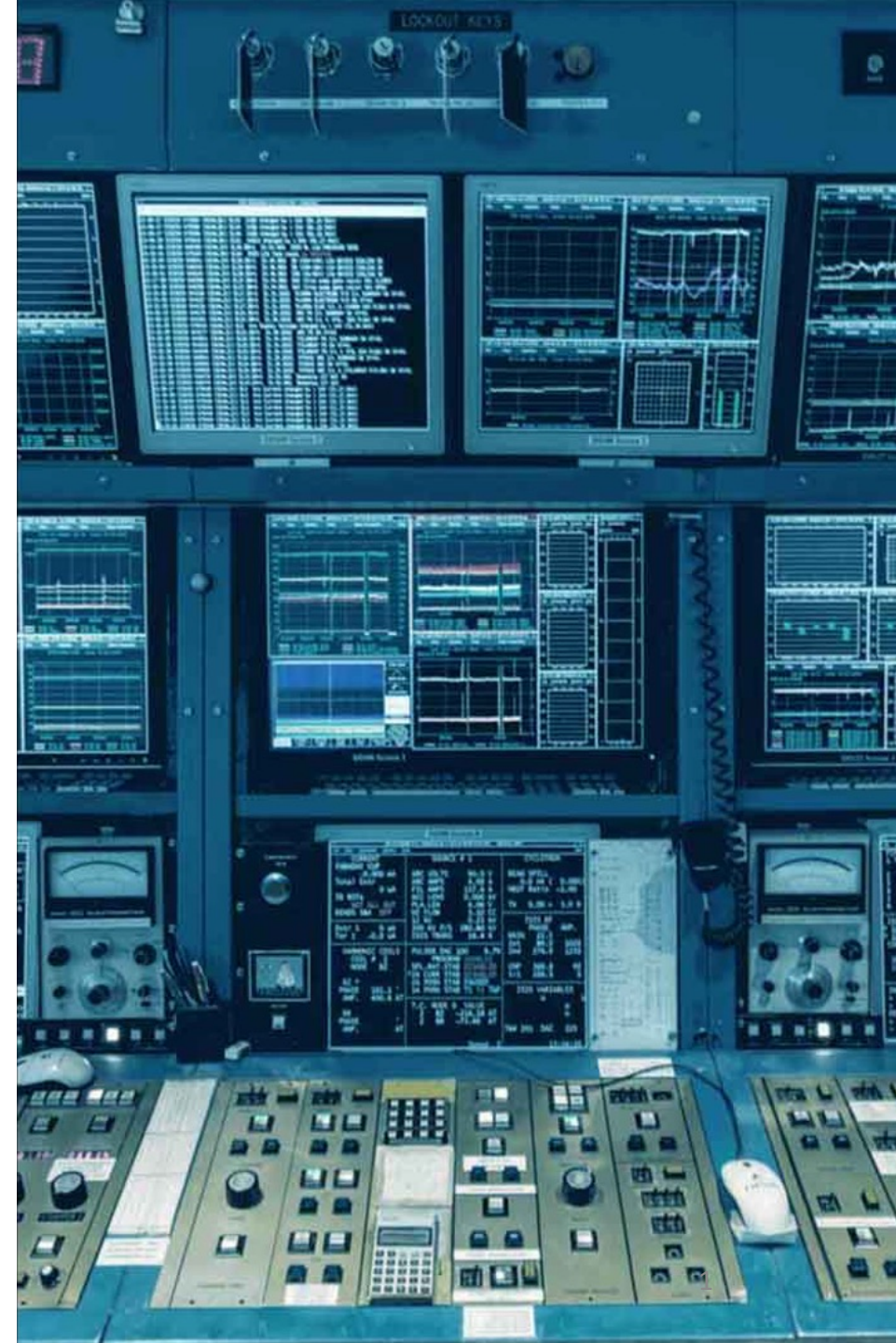


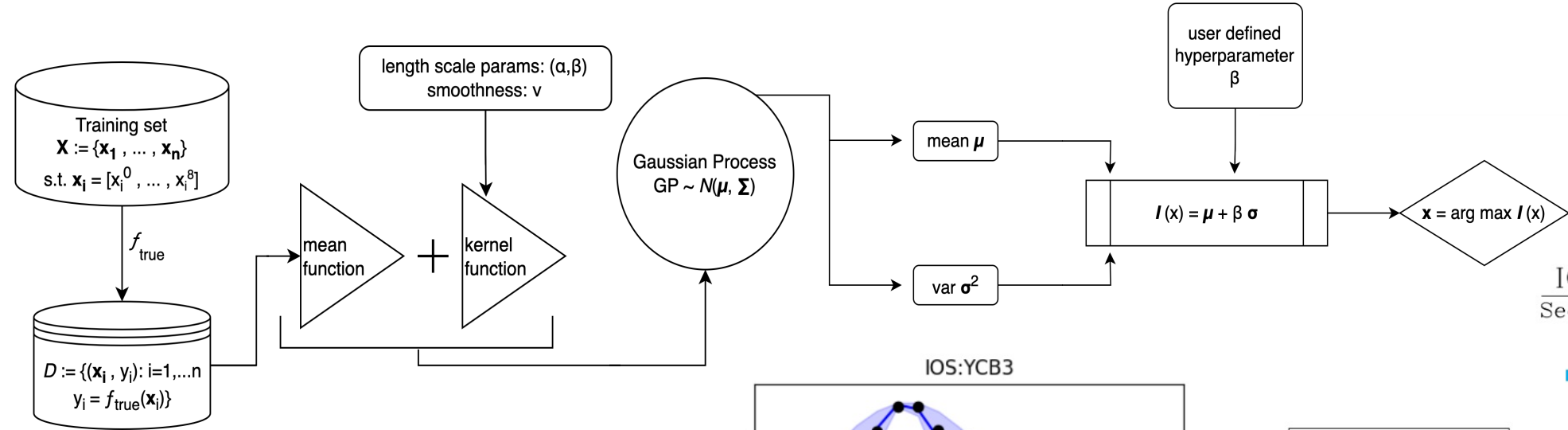
ML-Driven Tuning of Beamlines at TRIUMF

Introduction to Bayesian Optimization

Defne Tanyer, *University of Waterloo*

with W. Fedorko, D. Wang, H. Koay, O. Shelbaya, C. Charles, P. Jung





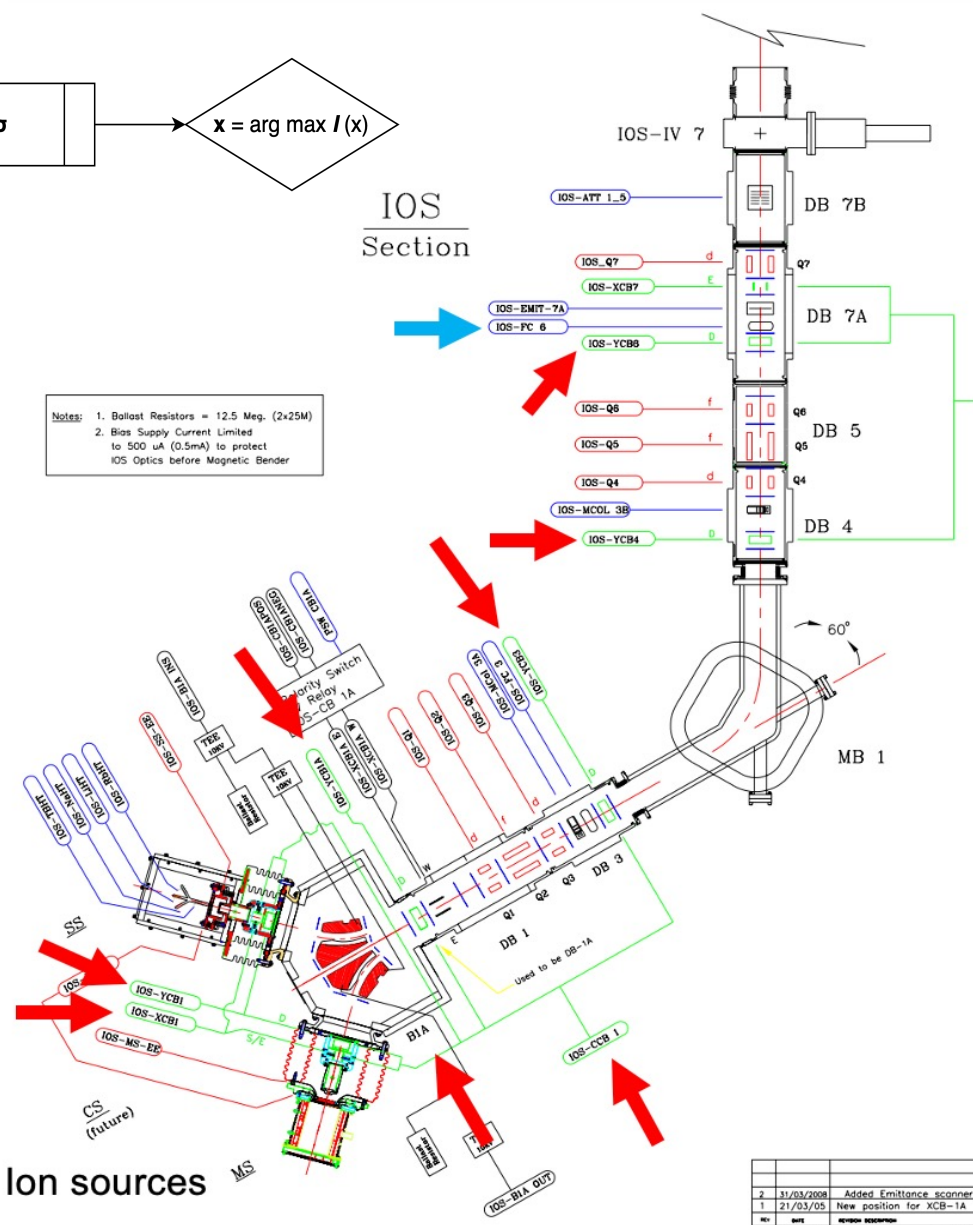
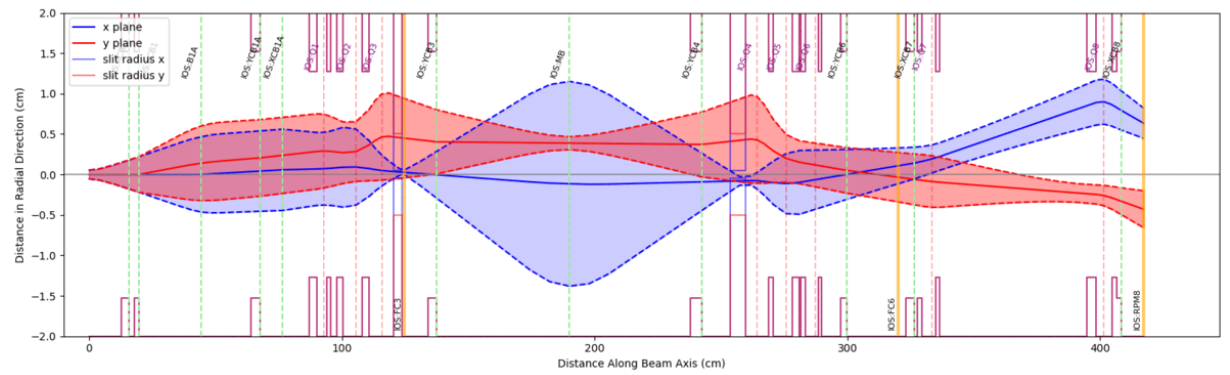
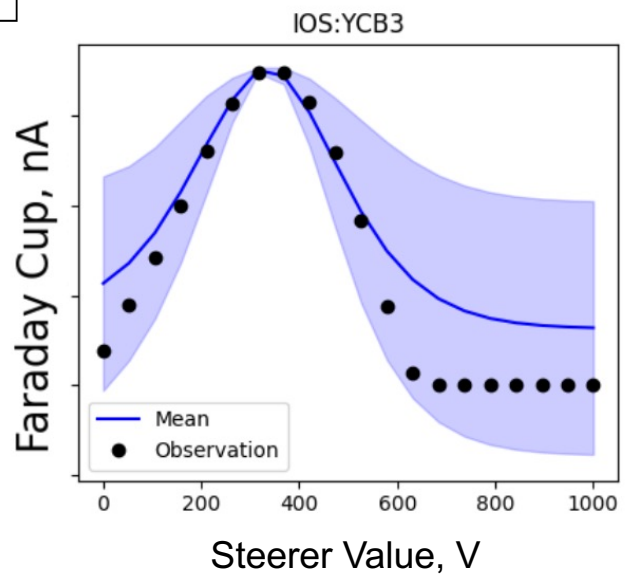
Likelihood

Prior

$$P(A|B) = \frac{P(B|A) \cdot P(A)}{P(B)}$$

Posterior

Evidence



2	31/03/2008	Added Emittance scanner
1	21/03/05	New position for XCB-1A
REV	DATE	DESCRIPTION
TRIUMF		
OIs to IOS-PC 6 / C		