



# Nuclear Data Evaluations

Elizabeth McCutchan



@BrookhavenLab



# National Nuclear Data Center



U.S. DEPARTMENT OF  
**ENERGY**

Office of  
Science

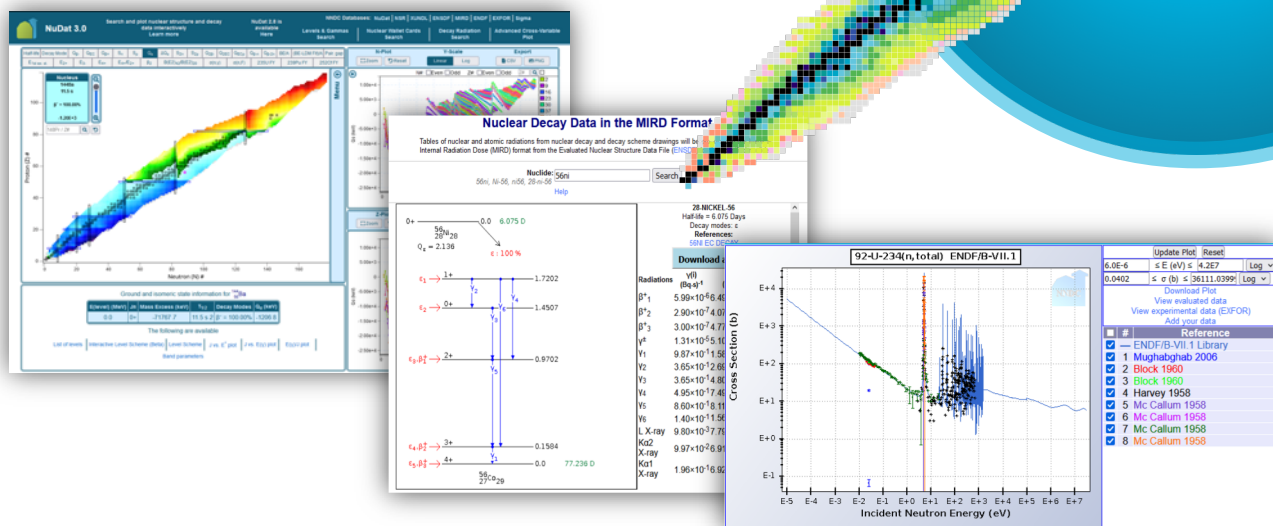
Maintaining and improving nuclear data for world-wide use

## Mission

To provide current, accurate, authoritative data for workers in pure and applied areas of nuclear science and engineering

## Services

Disseminate nuclear data through feature-rich web applications



## Databases

### Nuclear Structure & Decay:

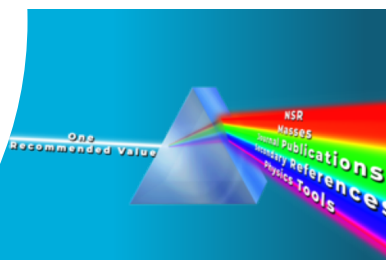
- ENSDF
- XUNDL

### Nuclear Reaction:

- ENDF
- EXFOR

### Bibliographic:

- NSR



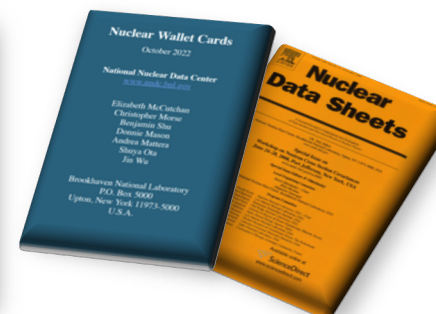
## Publications

### Nuclear Data Sheets:

World leading journal on nuclear data evaluations and research

### Nuclear Wallet Cards:

Ground and isomeric state nuclear properties of all-known nuclei



# ENSDF : the ONLY comprehensive resource for

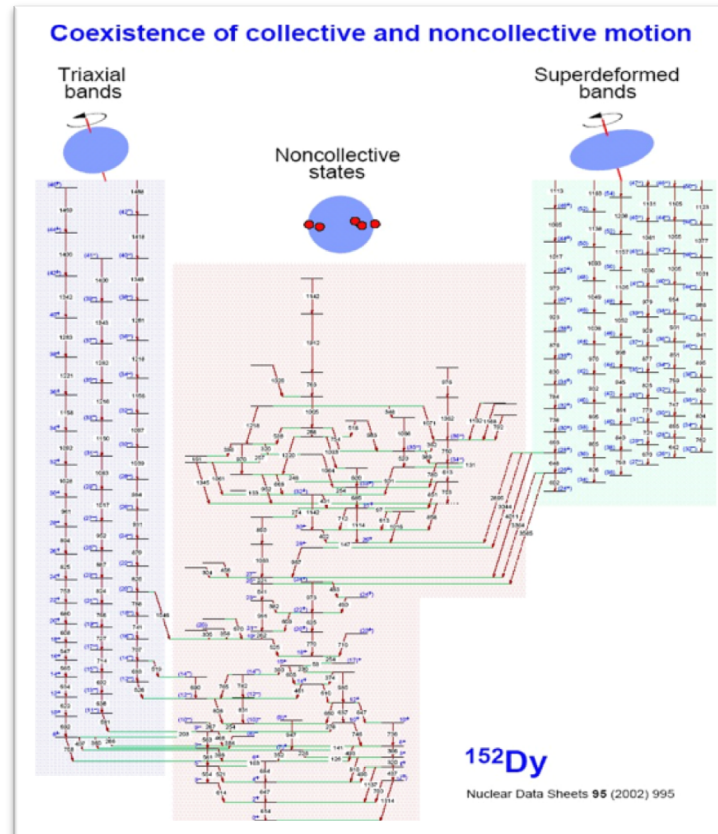
## Nuclear Structure

### Discrete Quantized States

- Excitation Energy
- Half-life
- Angular Momentum
- Magnetic Moment
- Configuration
- ...

### Emitted Radiation

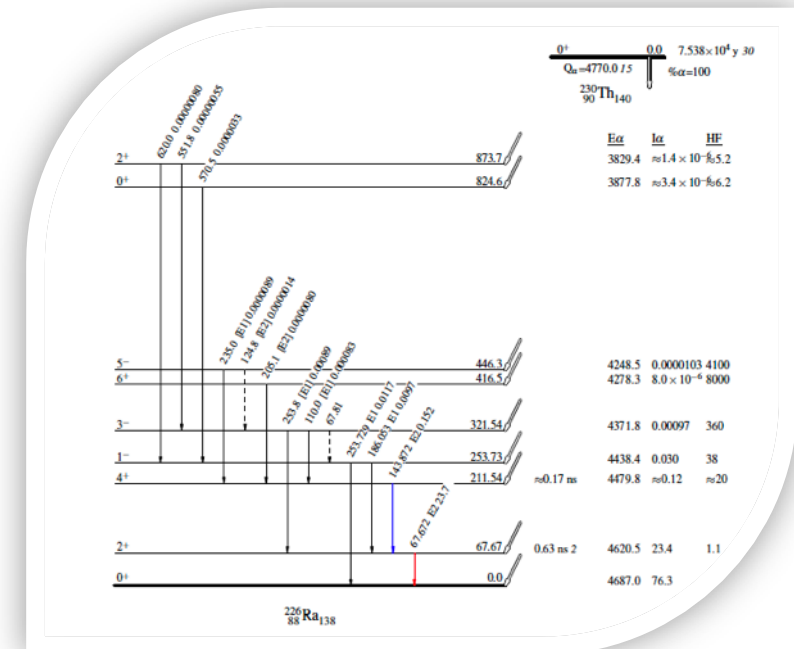
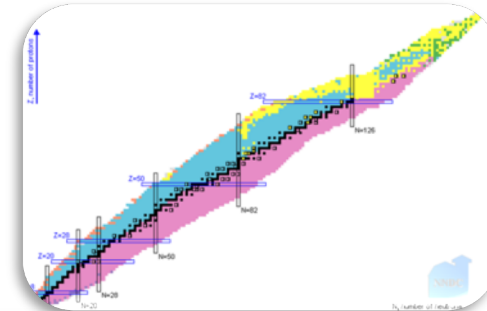
- Energy
- Intensity
- Dipole, Quadrupole, ...
- Mixing ratio
- Conversion coefficient



## Nuclear Decay Data

### For each decay type:

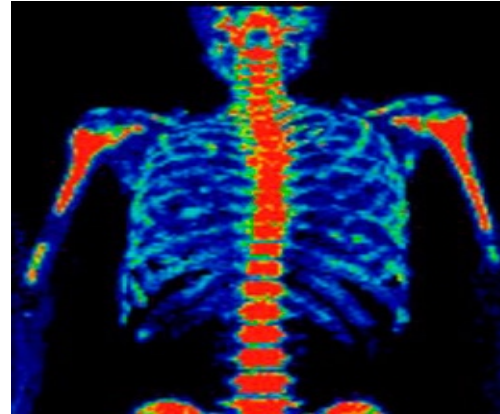
- Half-life
- Branching ratio
- Energy
- Intensity
- Coincidences
- ...



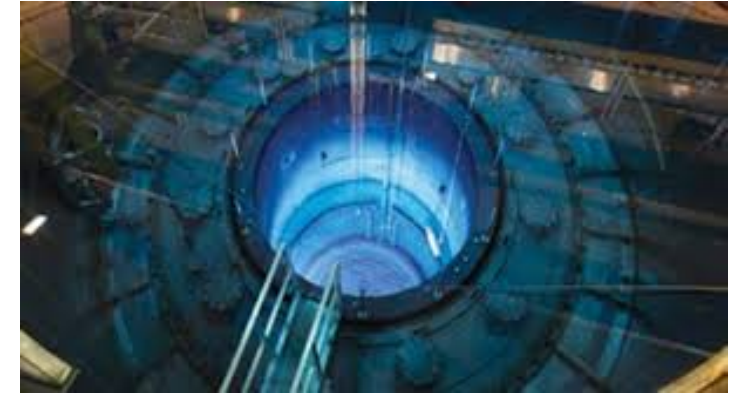
# Users of ENSDF



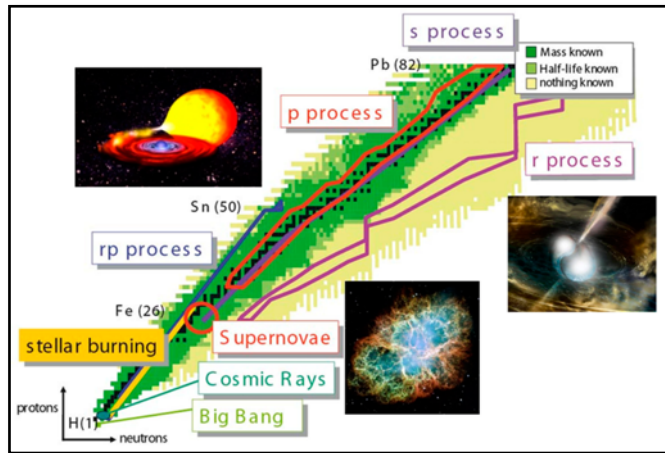
**Fundamental Nuclear Science**



**Nuclear Medicine**



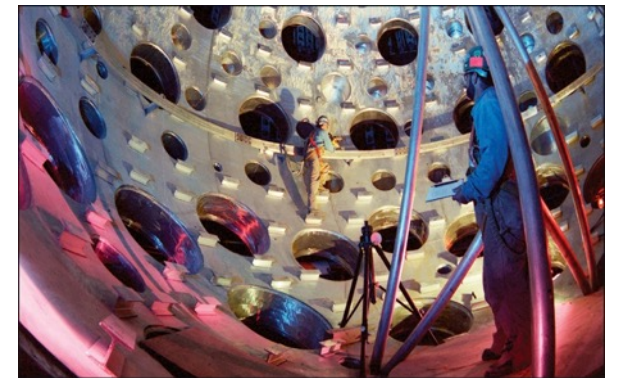
**Nuclear Power**



**Astrophysics**



**Homeland Security**



**Stockpile Stewardship**

# ENSDF - Organization & Management



INTERNATIONAL NETWORK OF NUCLEAR STRUCTURE AND  
DECAY DATA EVALUATORS (NSDD)

- NSDD network established in 1974 under the auspices of IAEA
- Meetings coordinated by IAEA nuclear data section
- Database management and storage by the National Nuclear Data Center

## Currently

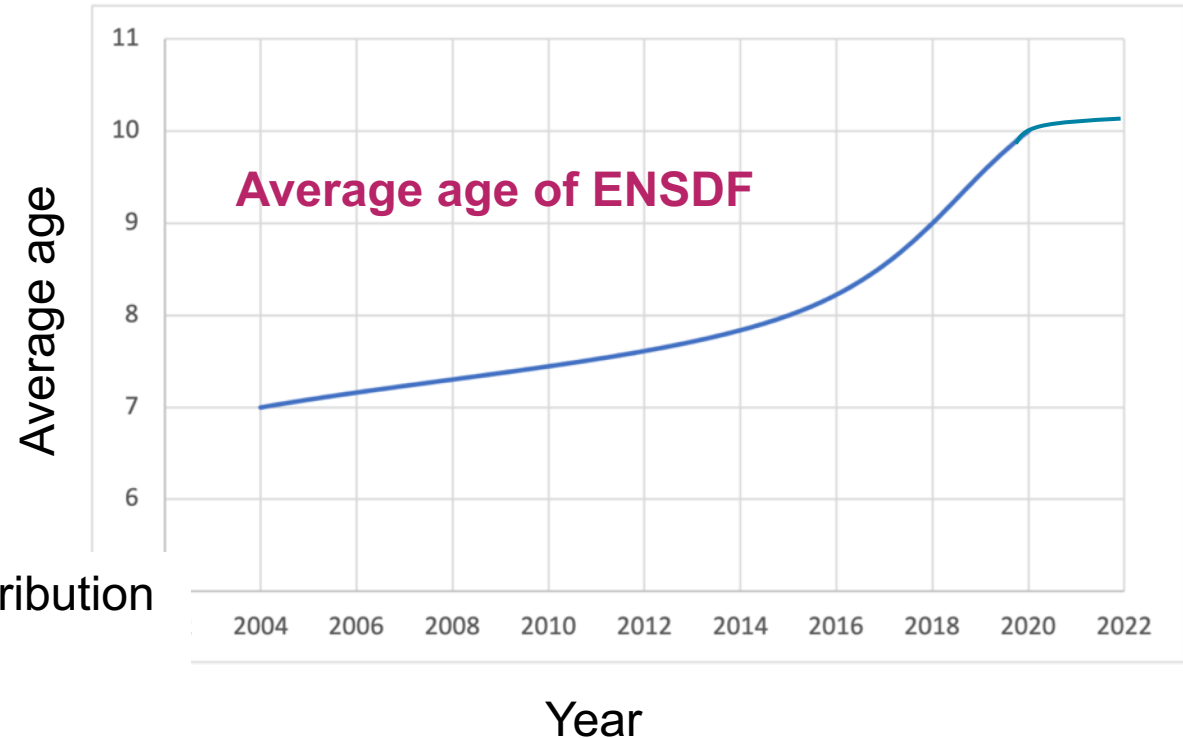
- 8 US Centers - all funded through DOE
  - ANL, BNL, LBNL, McMaster, MSU, ORNL, TAMU, TUNL
- 9 International Centers
  - PNPI/Russia, CIAE/China, Julin/China, JAEA/Japan, ANU/Australia, IFIN/Romania, Sofia/Bulgaria, Atomki/Hungary, VECC/Kolkata

2019 : Evaluated **187** nuclides, **13** international – **7%** contribution

2020 : Evaluated **144** nuclides, **0** international

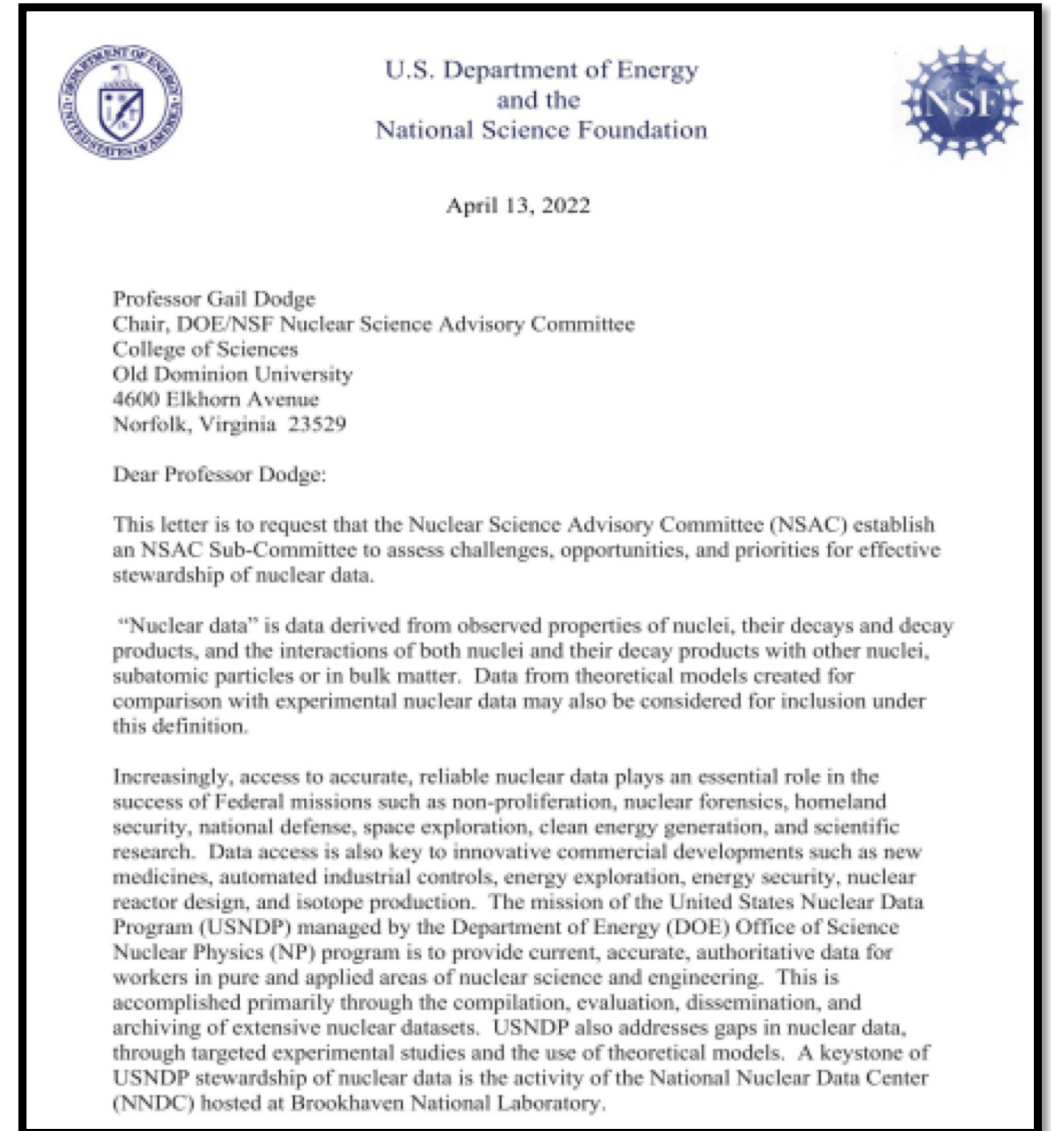
2021 : Evaluated **263** nuclides, **0** international

2022 : Evaluated **225** nuclides, **0** international



# Nuclear Data is coming into the spotlight

- NSAC charge to
  - Assess challenges, opportunities and priorities for effective stewardship of ND
  - Two reports have been produced
- US is currently going through long range planning process
- Nuclear data specific resolutions have emerged from all 3 town halls



# From Nuclear Structure, Reactions and Astrophysics Town Hall

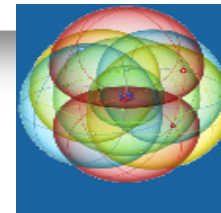
## Resolution 5

Nuclear data play an essential role in all facets of nuclear science. Access to reliable, complete and up-to-date nuclear structure and reaction data is crucial for the fundamental nuclear physics research enterprise, as well as for the successes of applied missions in the areas of defense and security, nuclear energy, space exploration, isotope production, and medical applications. It is thus imperative to maintain an effective US role in the stewardship of nuclear data.

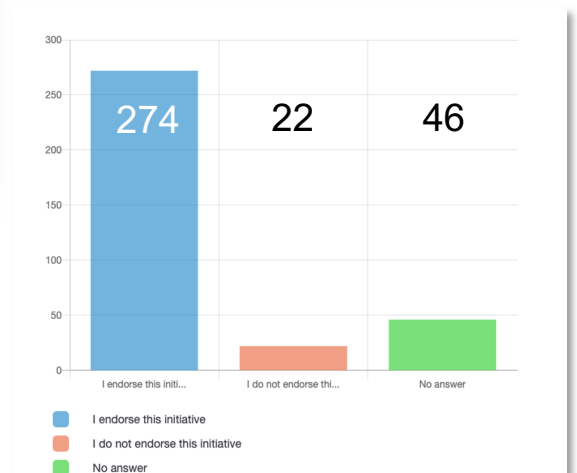
- We endorse support for the compilation, evaluation, dissemination and preservation of nuclear data and efforts to build a diverse, equitable and inclusive workforce that maintains reliable and up-to-date nuclear databases through national and international partnerships.
- We recommend prioritizing opportunities that enhance the prompt availability and quality of nuclear data and its utility for propelling scientific progress in nuclear structure, reactions and astrophysics and other fundamental physics research programs.
- We endorse identifying interagency-supported crosscutting opportunities for nuclear data with other programs, that enrich the utility of nuclear data in both science and society.

## Similar Nuclear Data Resolutions endorsed by:

- Nuclear Structure, Reactions and Astrophysics,
- Hot & Cold QCD and
- Fundamental Symmetries town hall meetings



2022 Low Energy Town Hall



# Opportunities in Europe - Nuclear Physics Expert Collaboration Committee (NuPECC) Long Range Plan 2024

## ENSDF contribution status in Europe

- 3 Data Centers (Bulgaria, Hungary, Romania)
- total declared contribution amounts to 12% of total effort
- Fragmented effort – effectively amounts to < 1% (past 5 years)
- Limited funding obtained from a EURATOM project (SANDA – ends 2023)

## NuPECC Long Range Plan 2024

- IAEA presentation at NuPECC Meeting, 2 Dec. 2022, Vienna
- Nuclear data and evaluation more prominent in the LPR 2024:
  - Workpackage 9: Open Science and Data
  - Subsection 9.5: Nuclear data(databases) and evaluation (IAEA contr.)
- Proposal for an IAEA meeting to discuss European strategy for nuclear data [done: see next slide]



# IAEA Consultant's Meeting on Needs for a Comprehensive European Plan to acquire and curate nuclear data, April 2023, IAEA, Vienna

**Participants:** NuPECC, EURATOM, CEA, ChETEC-INFRA, SANDA, DoE USNDP Manager

**Recommendations:** To ensure the timely incorporation of experimental data measured at European facilities in the nuclear databases and maintain expertise and autonomy in nuclear data compilation, evaluation and dissemination, the European nuclear physics community needs to

- Establish priorities for nuclear data measurements and evaluations that will be addressed by a comprehensive European nuclear data programme
- Establish a sustainable source of funding of measurements and data evaluation, including support of well-defined career paths in nuclear data that will involve national funding agencies and the European Commission (EC) (EURATOM and all other relevant EU work programmes)
- Reinforce cooperation with international organizations to attract and train the next generation of evaluators

## **Actions:**

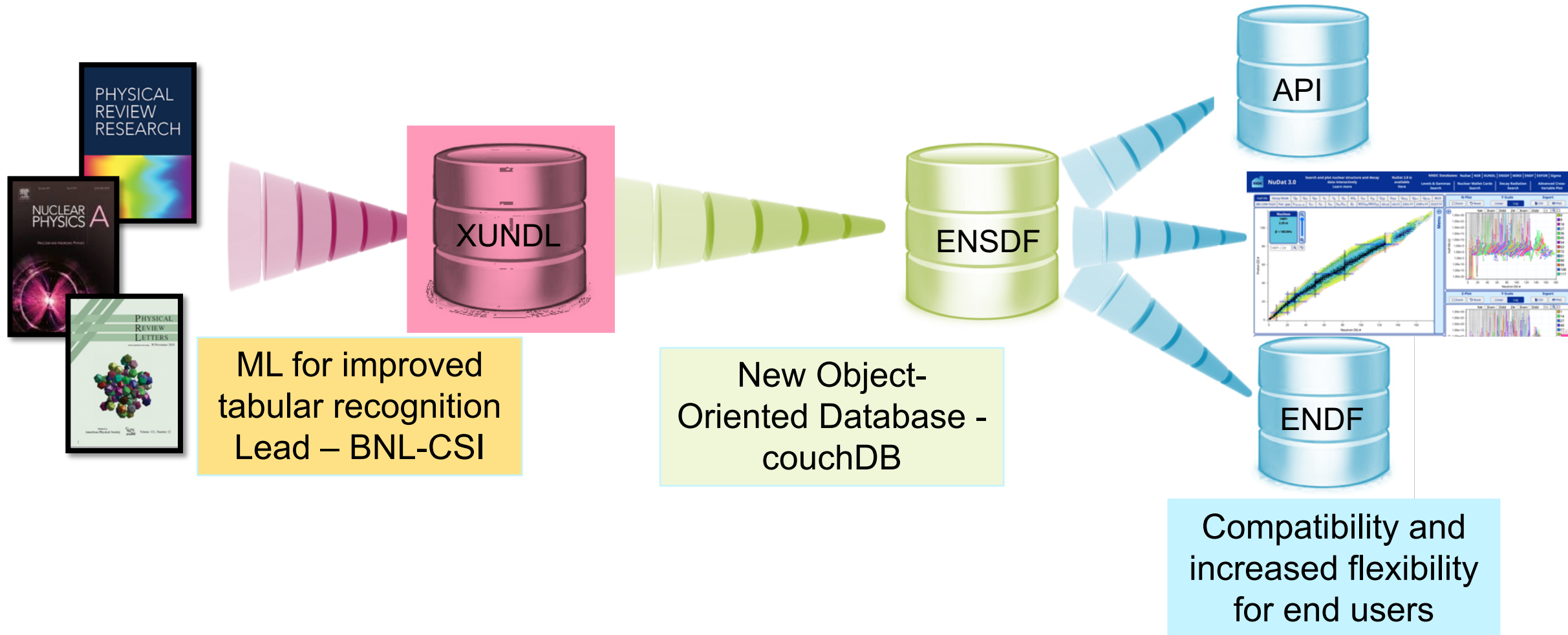
- Organize side event on nuclear data at IAEA General Conference 2023 (led by JRC Geel) with contributions from US, Europe, Japan, China [in progress] – to reach out to nuclear stakeholders of IAEA member states
- Meeting of stakeholders (national and EU funding agencies and programs), industry partners, representatives of nuclear physics research and nuclear data communities, international organizations
- Reach out (separate meetings) to national and EU funding agencies
- Organize workshops, summer schools, and webinars to raise awareness of the importance of nuclear data and to enhance capacity building in nuclear data evaluation methods, validation, and dissemination.

# Major modernization efforts underway



# ENSDF Modernization

DOE has made significant investment to modernize and improve ENSDF  
3 year project involving 3 DOE national laboratories – BNL – ANL - LLNL



# A new object-oriented database for ENSDF

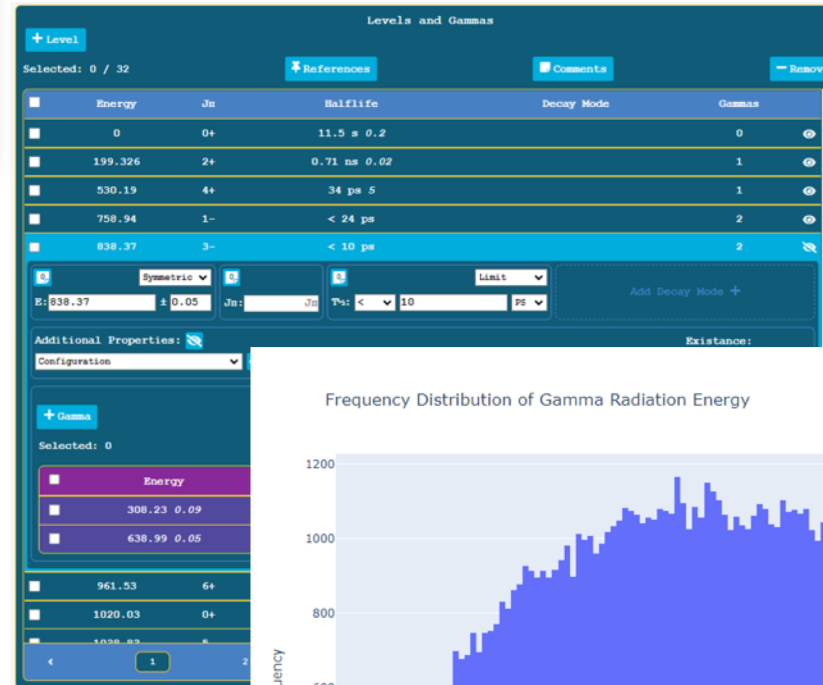
We've migrated from 80 column ASCII to JSON based schema

Developed a new Editor for ENSDF evaluators

And (for the first time!) designed an API for ENSDF

```
137CS PN
137CS L 0.0 7/2+ 30.08 Y 9 A
137CSX L XREF=ACDEFGH
137CS2 L %B=-100$MOMM1=+2.8413 1 (1989Ra17)$MOME2=+0.051 1 (1989Ra17)
137CS cL T$Deduced by evaluators using the Limitation of Relative Statistical
137CS2cL Weights (LRSW) method for analyzing the following set of
137CS3cL discrepant ( $|h\{+2\}|/n=18.6$ ) experimental values: 10970 d {I20};
137CS4cL (2004Sc04); 11018 d {I10} (2002Un02); 10941 d {I7} (1992Go24);
137CS5cL 10968 d {I5} (1990Ma15); 11009 d {I11} (1980Ho17); 10906 d {I33}
137CS6cL (1978Gr08); 11034 d {I29} (1973Co39); 11021 d {I5} (1973Di01); 11023 d
137CS7cL {I37} (1972Em01); 10921 d {I17} (1970Wa19); 11191 d {I157} (1970Ha32);
137CS8cL 11286 d {I256}, 10921 d {I183} (1965Fl01); 11220 d {I47} (1965Le25);
```

```
{
  "spinParityValues": [
    {
      "spin": 2,
      "isTentativeSpin": true,
      "isTentativeParity": true,
      "parity": "+",
      "parityNumber": 1
    },
    {
      "spin": 3,
      "isTentativeSpin": true,
      "isTentativeParity": true,
      "parity": "-",
      "parityNumber": -1
    }
  ],
  "comments": [
    "Assignments are based on..."
  ]
}
```



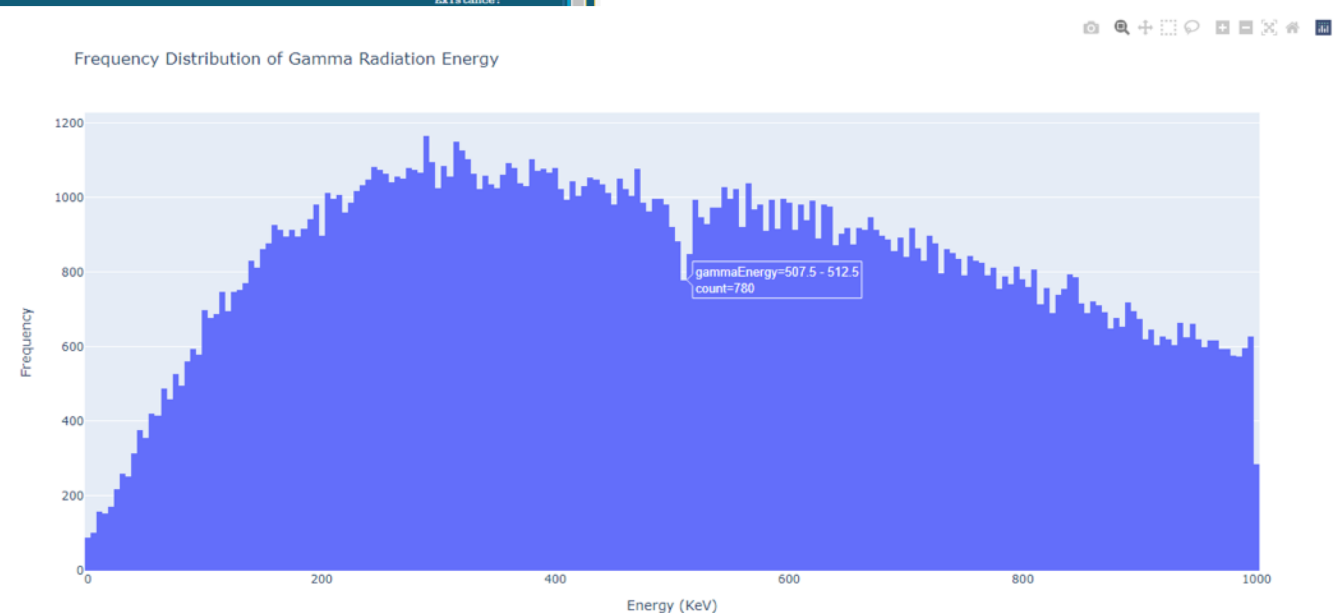
```
# Initialize API
api = ensdfAPI(ipAddress="127.0.0.1", port=5001)

# Get all gammas 0-1000 keV
values_dict=api.filterByGammas(0,1000)
dataframe = plot.createViewDataFrame(values_dict)

# Label plot
plot.configuration.setAxisTitle("x", "Energy (KeV)")
plot.configuration.setAxisTitle("y", "Frequency")
plot.configuration.setTitle("Frequency Distribution of Gamma Radiation Energy")

# Plot as a histogram
figure=plot.createHistogram(dataframe, "gammaEnergy")

plot.showFigure(figure)
```



# WalletCraft: a new evaluation of properties of ground-state and long-lived isomers for all known nuclei

Evaluation for g.s. and isomers ( $T_{1/2} > 100\text{ms}$ ) of:

- Spin/Parity
- Mass Excess – from AME2020
- Half-life, Width or Abundance
- Decay Mode(s)

Major changes *under the hood*: Advantages:

- New JSON-based OODB
- We store experimental measurements (building block of the evaluation)
- Transparent documentation of evaluation history
- Format can be easily read in modern codes and data plotted/analyzed
- Allows for much shorter versioning (from 5-10 yr to ~1yr)

## Nuclear Wallet Cards

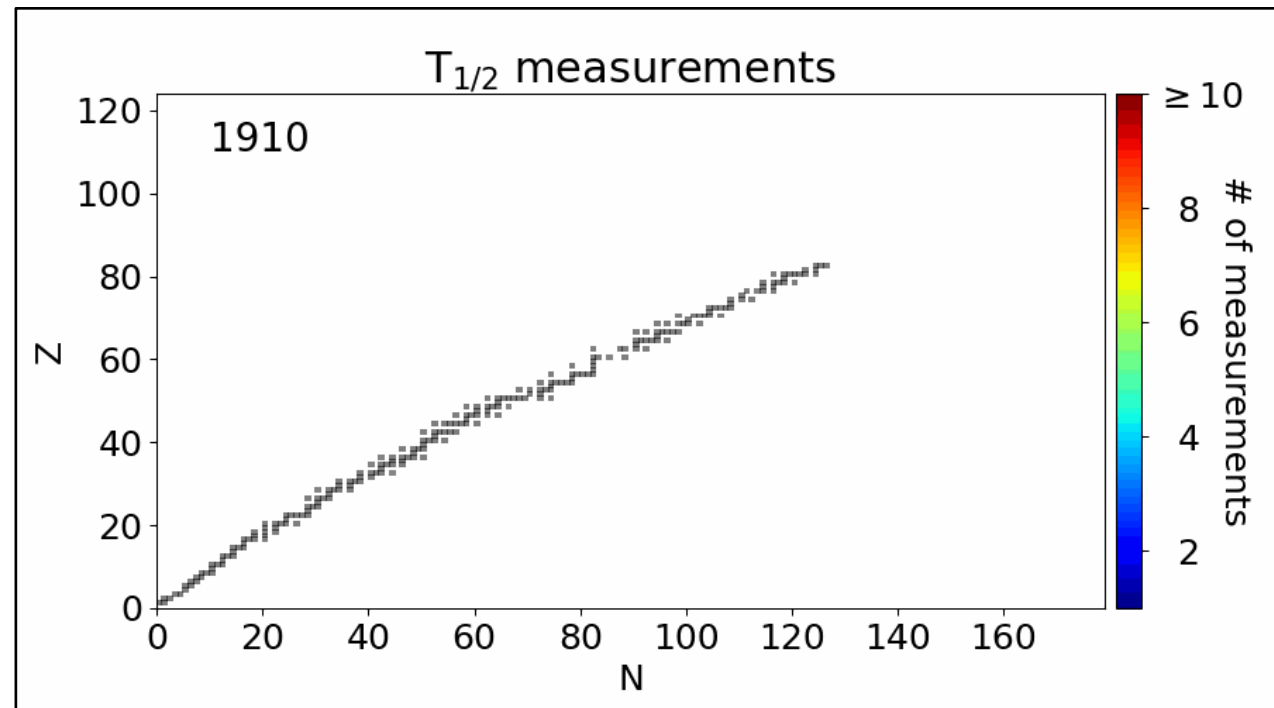
October 2022

National Nuclear Data Center  
[www.nndc.bnl.gov](http://www.nndc.bnl.gov)

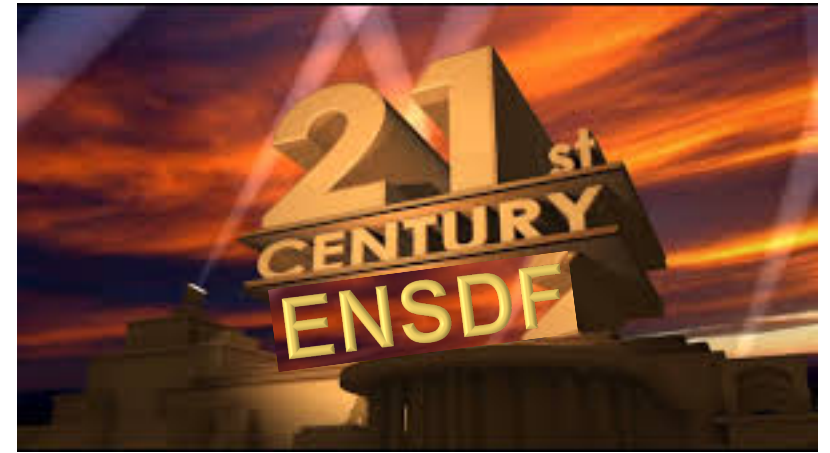
Elizabeth McCutchan  
Christopher Morse  
Benjamin Shu  
Donnie Mason  
Andrea Mattera  
Shuya Ota  
Jin Wu

Brookhaven National Laboratory  
P.O. Box 5000  
Upton, New York 11973-5000  
U.S.A.

Thumbnail of a Nuclear Wallet Card showing nuclear data for a specific nucleus, including mass excess, half-life, and decay modes.



# The future looks bright



- ENSDF has grown into definitive source for Nuclear Structure and Decay data
- Tools for accessing database, print and web, likewise have evolved
- In process of completely modernizing format and tools

**BUT .... we need help**

- Return to the original model of ENSDF with broad international contributions
- Dedicated funding at the level of 50% or more
- Long term commitments to learning and maintaining ENSDF evaluation expertise