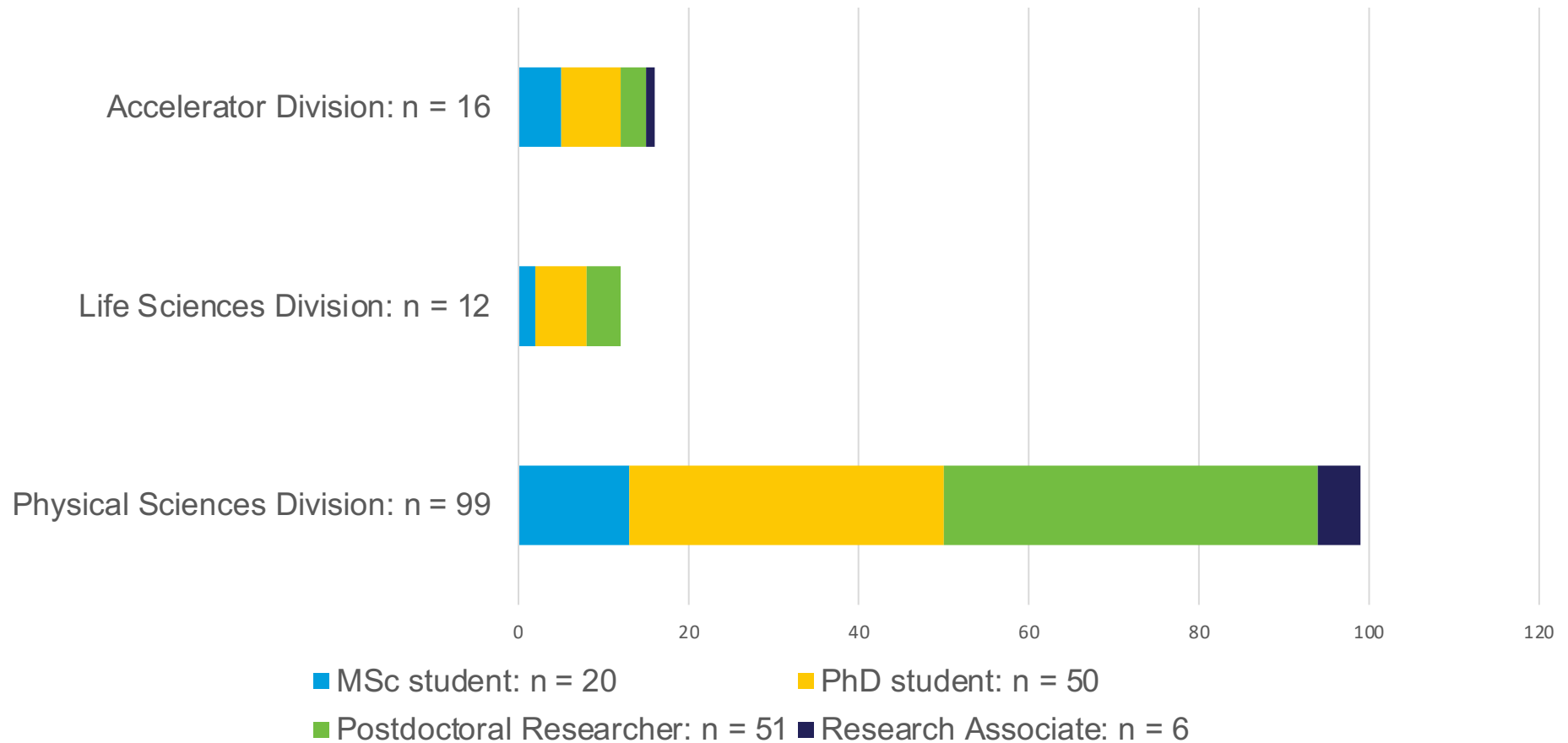


GAPS Perspective on 5 year plan

Louis Croquette
GAPS Vice Chair HR

GAPS Demographics

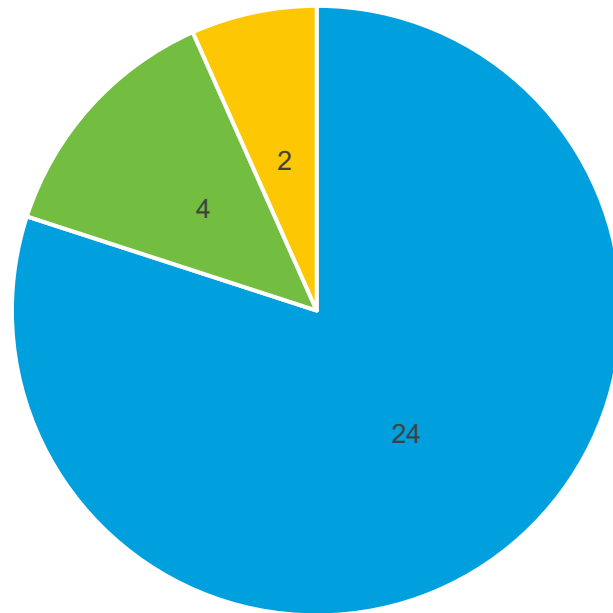
- **Grads And Postdocs Society**
- Advocate for graduate students and postdocs at TRIUMF



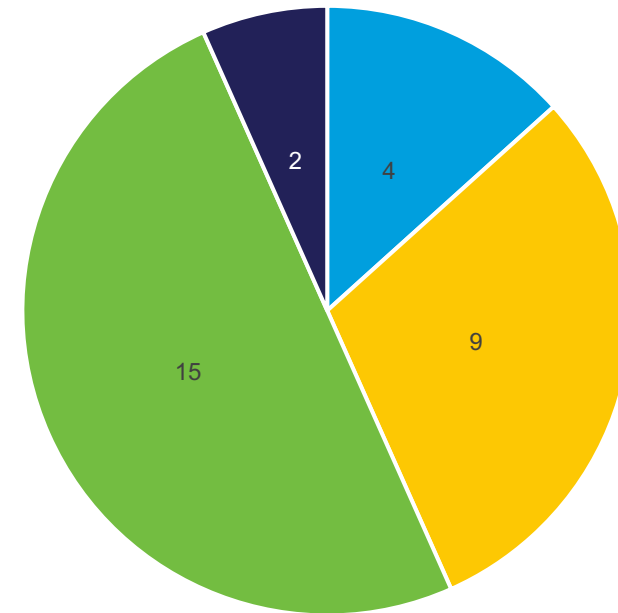
GAPS 5YP feedback

- Initial in-person session to discuss 5YP and impact of extended shutdown
- Survey – 35 responses / 127 students and postdocs \approx 30%

TRIUMF Division



Position at TRIUMF

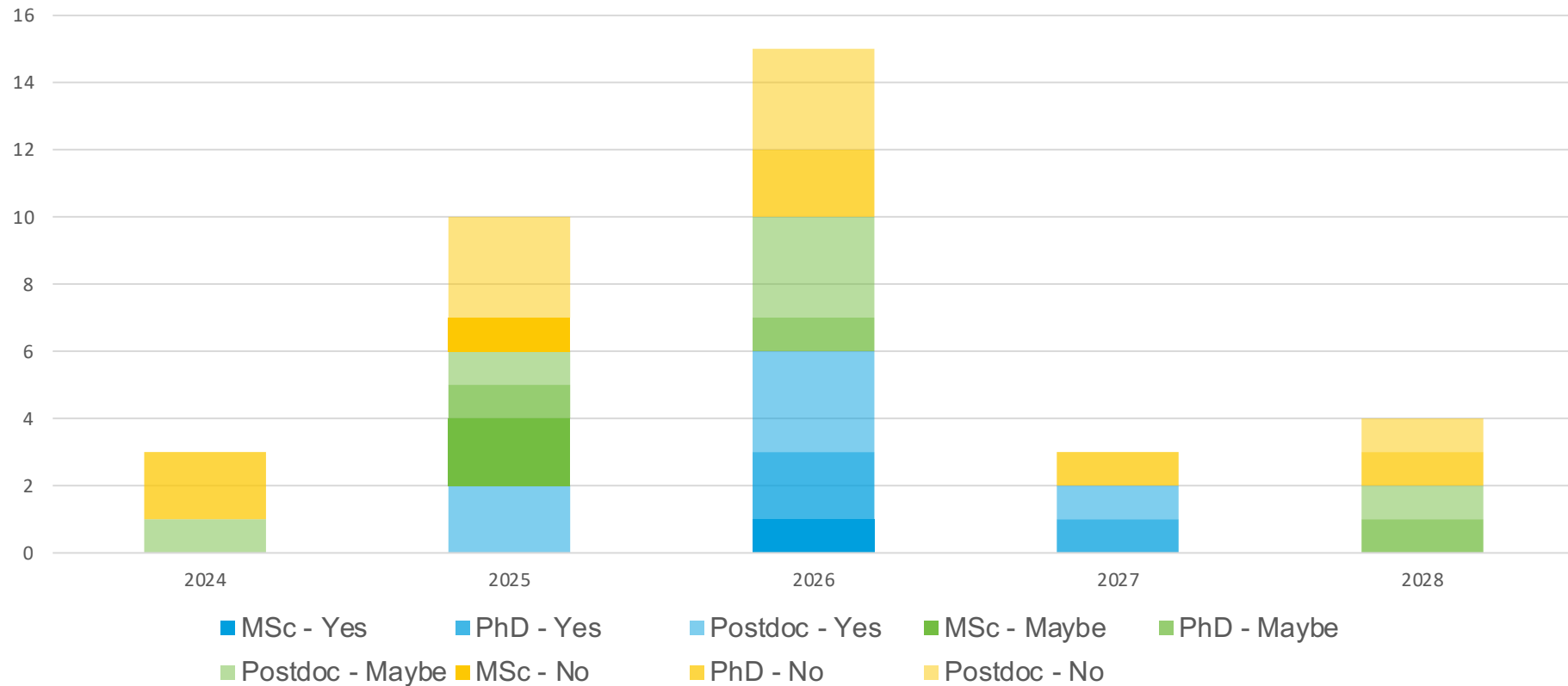


■ Physical Sciences Division ■ Accelerator Division ■ Life Sciences Division ■ MSc student ■ PhD student ■ Postdoctoral Researcher ■ Research Associate

Note: 5 anonymous submissions

Leave date from TRIUMF

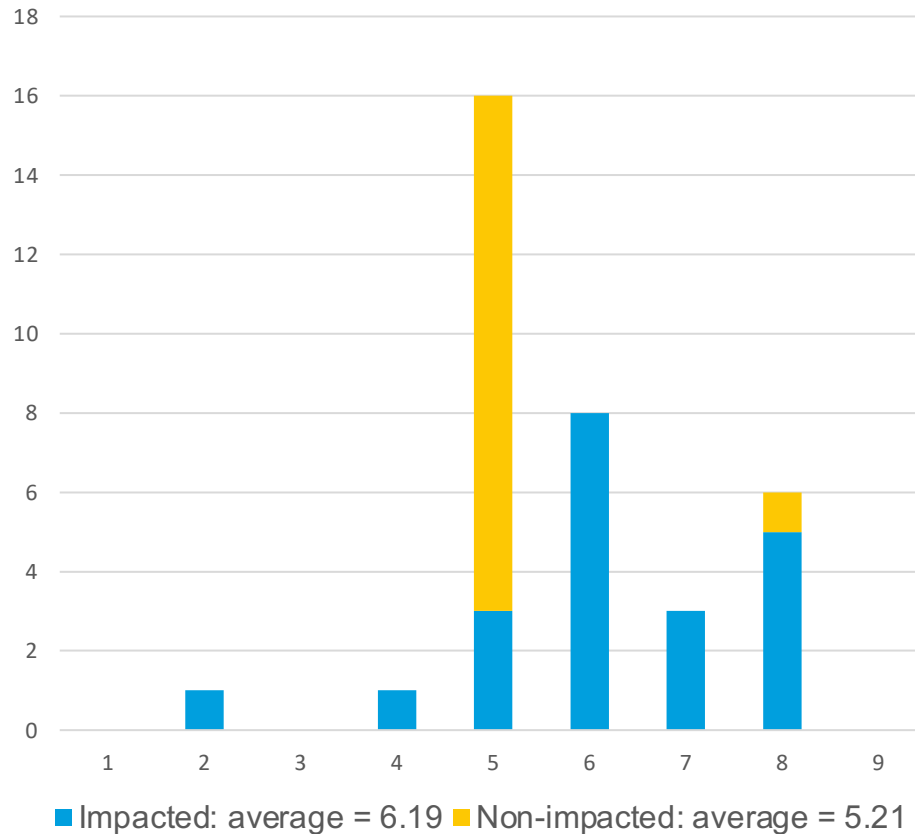
Do you expect to be impacted by an extended main accelerator shutdown in 2026?



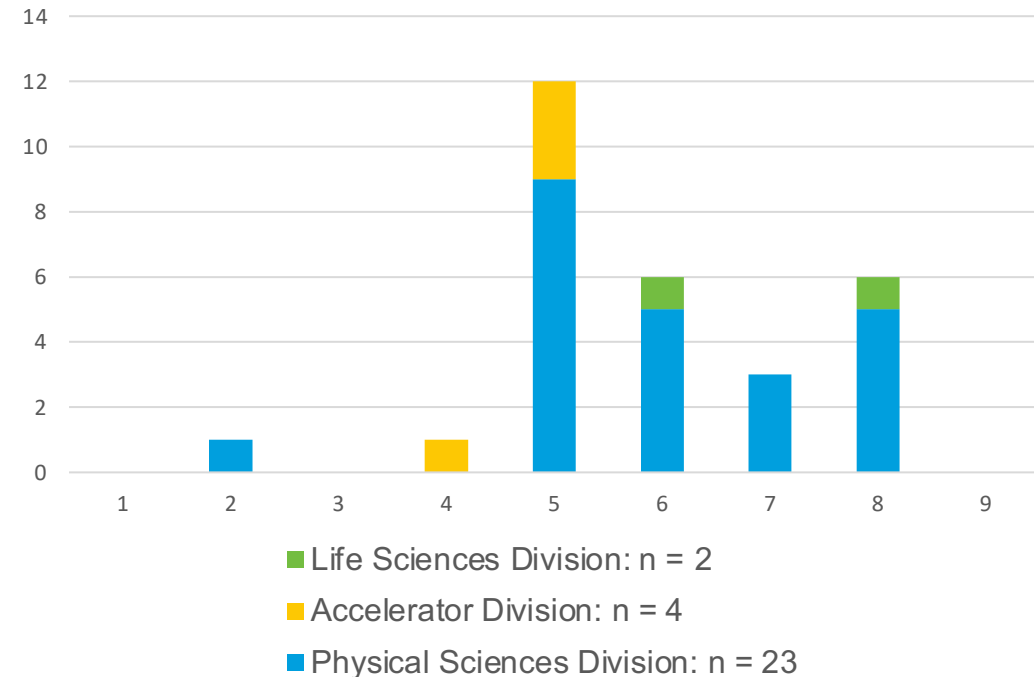
“Impacts for students include delayed graduation (so lost opportunity) and tuition fees.”

Extended shutdown impact on GAPS

Rate the impact of an extended shutdown
(1 very positive, 5 no impact 9 very negative)



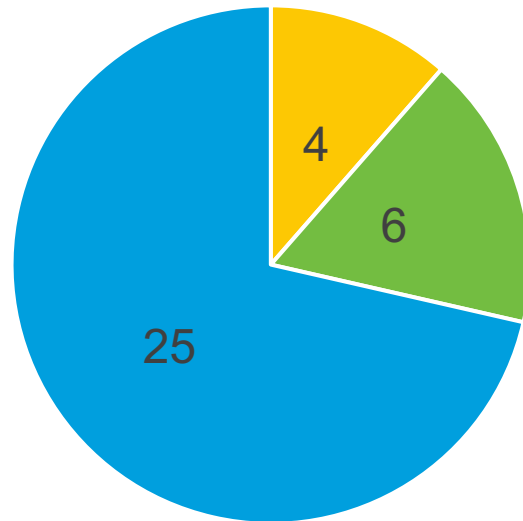
Rate the impact of an extended shutdown
(1 very positive, 9 very negative)



“It would possibly delay graduation by at least a year or drastically change the course of my research plans and material for my dissertation.”

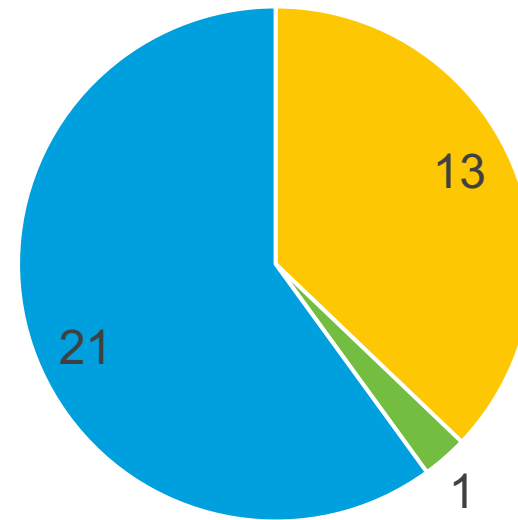
Extended shutdown GAPS sentiment

Would prior knowledge of an extended shutdown have impacted your decision to come to TRIUMF for your degree?



■ Yes ■ Maybe ■ No

If you had to decide now whether to come to TRIUMF, would an extended shutdown impact your decision?



■ Yes ■ Maybe ■ No

“I would not come to TRIUMF if I knew that an extended shutdown is happening.”

GAPS sentiment summary

- Over 36% of GAPS members here in 2026 will be impacted by extended shutdown
 - Increases to over 63% if included “Maybe” response
- Wide range of impact on GAPS members – some positive and but mostly negative
 - Some divisions affected more
- Extended shutdown to impact number of graduate students and postdocs in 2026/2027 and beyond
- Overall – GAPS acknowledges that extended shutdown is likely the best plan for TRIUMF, want support from the lab to mitigate impact

Highest priority initiatives

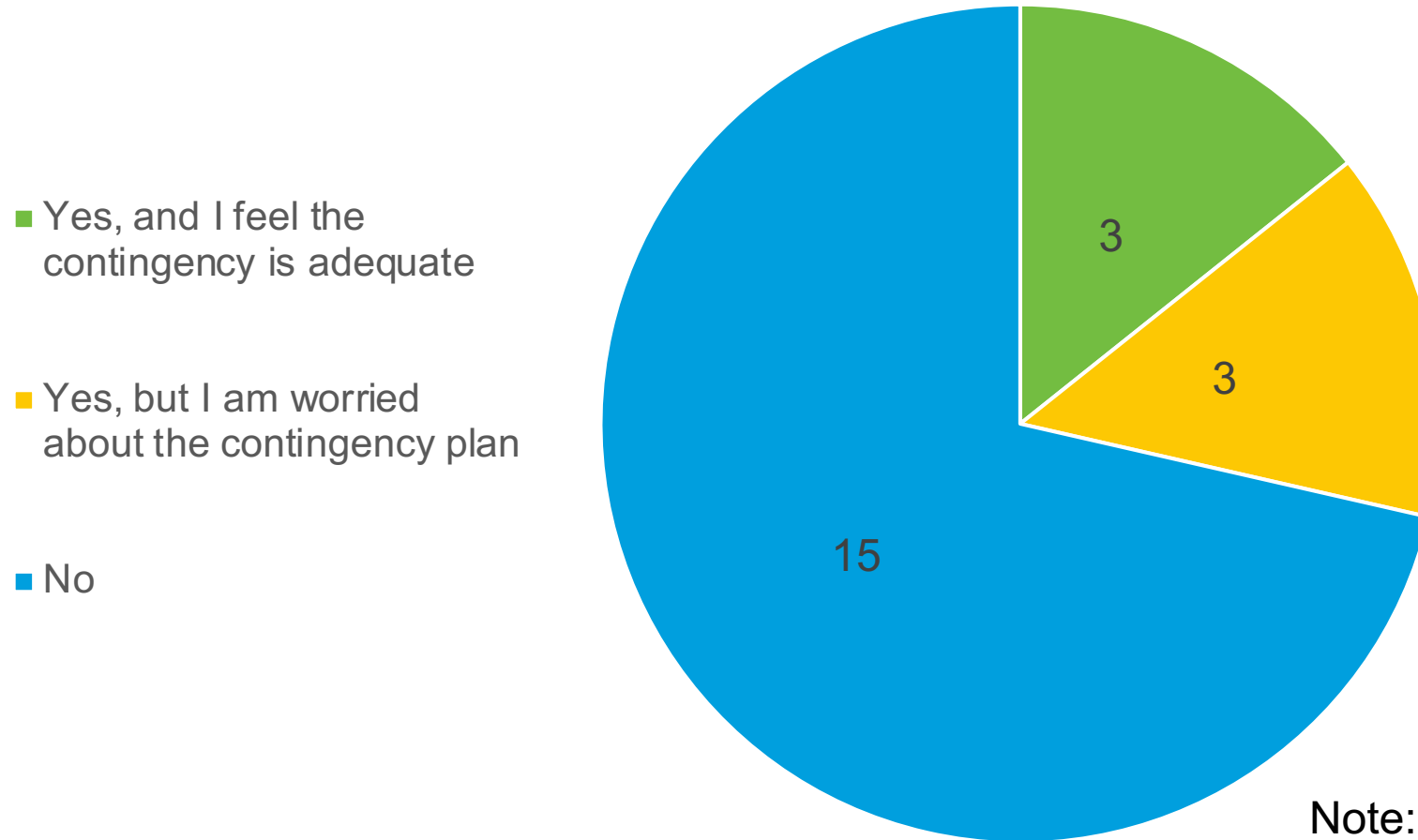
- Supervisors need to talk with their students
 - Critical for student-supervisor alignment to ensure thesis/project progress
 - Necessary to develop a new plan, and multiple contingency plans for prior to and during extended shutdown
 - Facilitate students acquiring data in other labs
- GAPS consultation for major resource allocation decisions
 - Have GAPS representation involved in high- and medium-level discussions
 - Consulted if further extension of shutdown is necessary
- Continued transparency
 - Plans and project updates should be easily available
 - Clear definitions and goals

Support from TRIUMF

- Prioritizing students when scheduling beamtime
 - Include question on beam schedule request
- Regular schedule for 2025 and 2027 – 8 full months of beamtime
- Support to conduct research in other labs
 - Financial
 - Make use of existing connections
- Support for offline experiments
 - RPG, machine shop, electronics shop, medical radionuclide production, target hall for long-lived radionuclides

Contingency plans

Asked to **impacted GAPS members**:
Have you discussed a contingency plan with your supervisor?



Note: 14 students non-impacted

Ideas for contingency plans

- Presents an opportunity for engagement
- Build into timeline work that can be done offline during 2026 – simulations, data analysis, paper writing, thesis writing, conferences
 - Datasets from previous beamtimes
 - Offline studies
- Find alternate projects
 - Experiment upgrades
 - Detector development – requires facilities support
 - Radioisotope production independent of main cyclotron
- Find collaboration partners at other facilities

Thank you



Questions?

