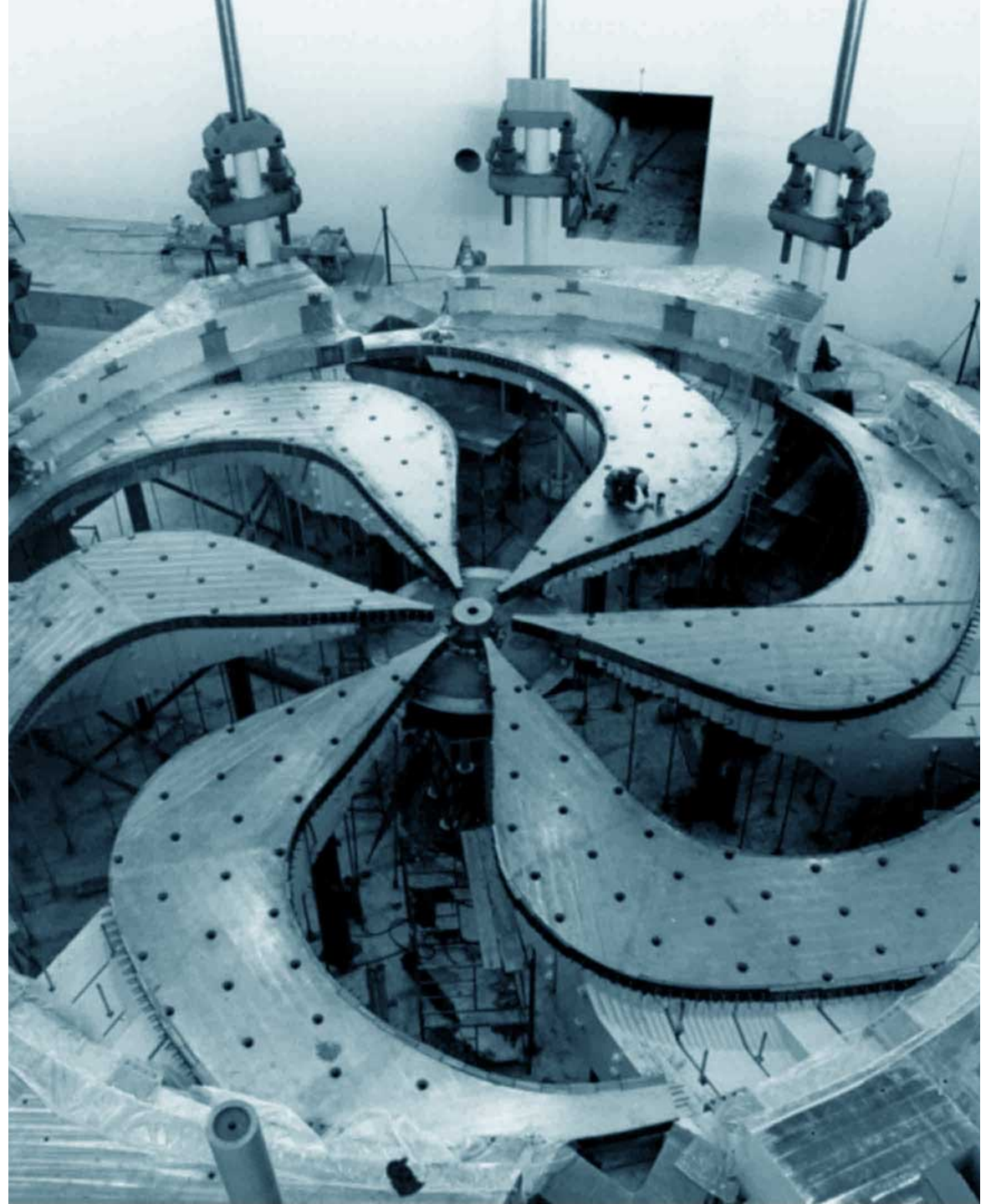


HQP Seating, Summer 2024

2024-04-11



Approach to HQP Seating Arrangement

2

- Priorities:
 - Continuity of seating for individuals
 - Desks for PD and GS (long-term HQP) in MOB
 - Continuity of desk usage for groups
- Request to add HQP to spreadsheet at:
[PPD_SciTech_HQP_Location_Summer2024.xlsx](#)
- If group will use continue to use desk but for new person, can mark that in spreadsheet
 - May need to revisit if PD/GS desk is now used for UG

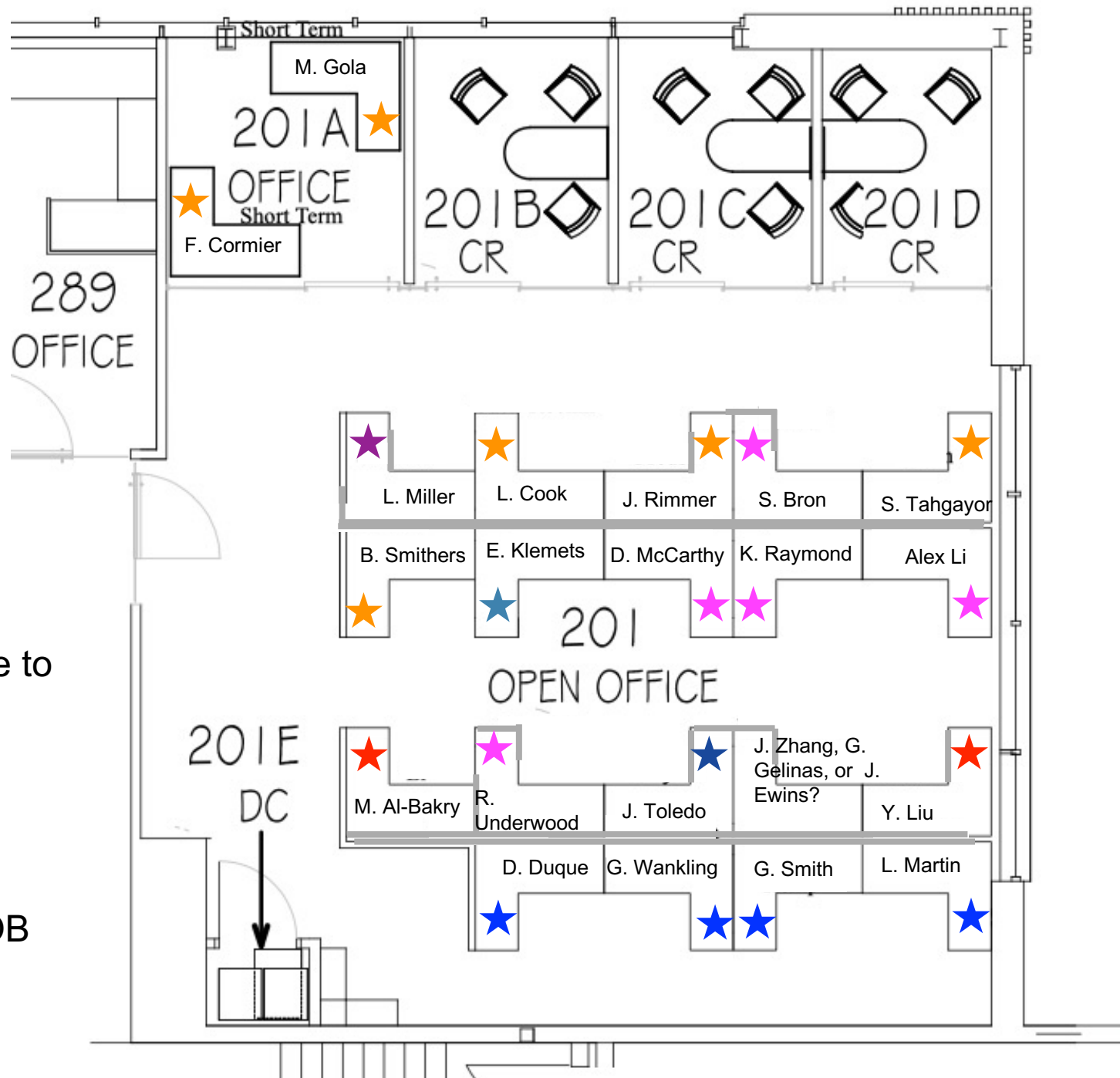
MOB 201

- ★ Hyper-K/T2K
- ★ SuperCDMS
- ★ ALHPA
- ★ DarkSide/nEXO
- ★ DarkLight
- ★ ATLAS/FC
- ★ Computing
- ★ PIONEER/PIENU

M. Gola will be at CERN from mid-June to end of August

Check if desk could be used by visiting Darklight GS, D. Markus

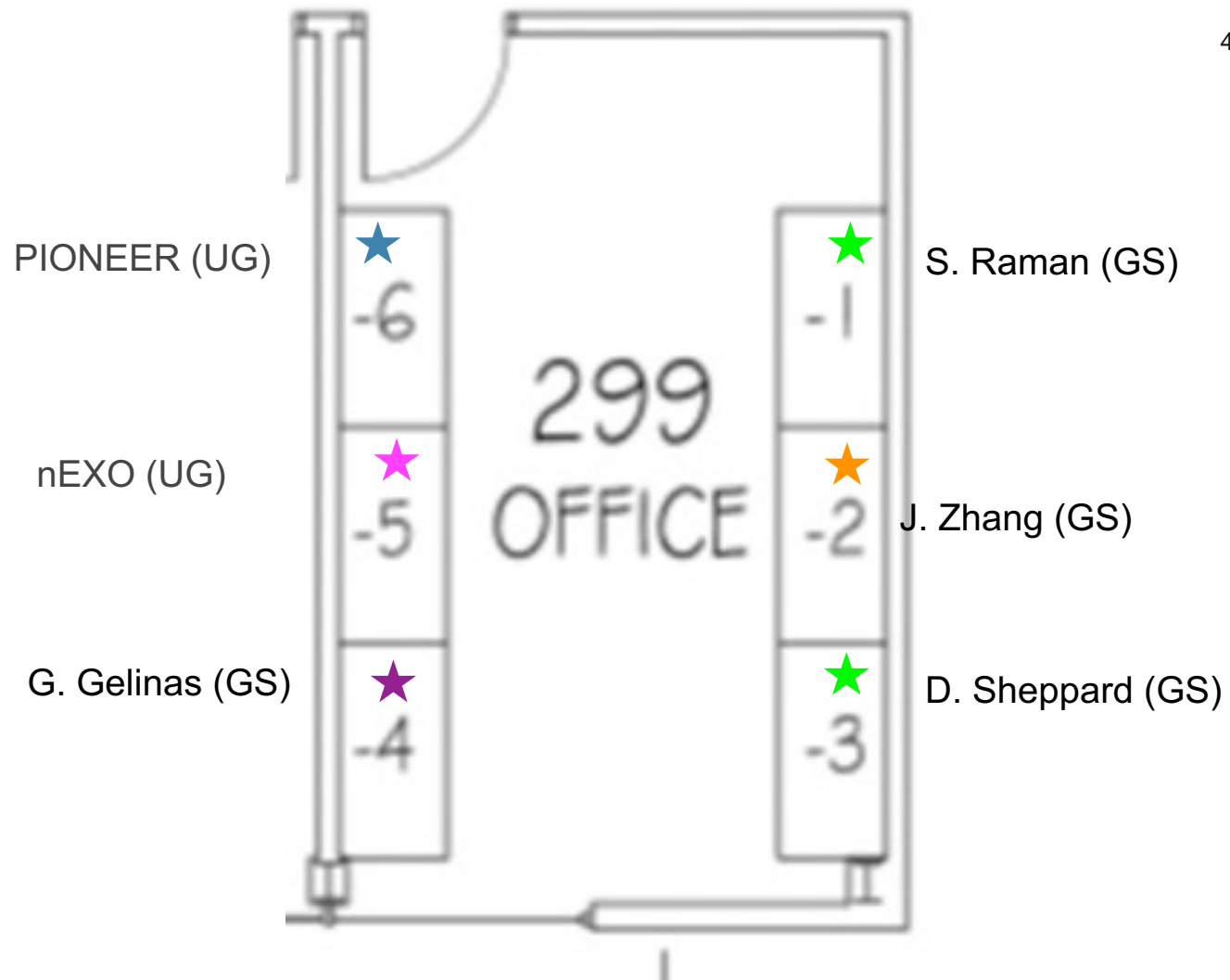
New ALPHA GS or one of GS from MOB 299 to move in



MOB 299

- ★ Hyper-K/T2K
- ★ SuperCDMS
- ★ ALHPA
- ★ DarkSide/nEXO
- ★ DarkLight
- ★ ATLAS/FC
- ★ Computing
- ★ PIONEER/PIENU

S. Raman and D. Sheppard have desks at UBC and SFU. How often at TRIUMF?



UG Seating

- Aim to prioritize seating in MOB for PD, GS and long-term UG
- Currently assume two UG seats in MOB 299 (based on continuity of group use)
- Remaining UG:
 - Matthew Marzano (Neutrino)
 - Takumi Horiba (Neutrino/ML)
 - Zach Charlesworth (ALPHA)
 - Ashley Ferreira (ALPHA)
 - Jasper He (ALPHA)
 - BCIT Student (ALPHA)
 - Angela Gonzalez (Darklight)
 - Karamvir Gill (Darklight)
 - Jesus Corral (PIONEER)
 - William Chow (PIONEER)
 - Ian Lu (QC/ATLAS)
 - Deniz Sogutlu (QC/ATLAS)
 - Up to 5 theory co-ops
- Need desks for 12 (up to 17 including theory) UG

Trailer Ff

We have about 13 additional desks in Trailer Ff if we can double up in a couple of the offices.

Checking with Adrian about the office use

